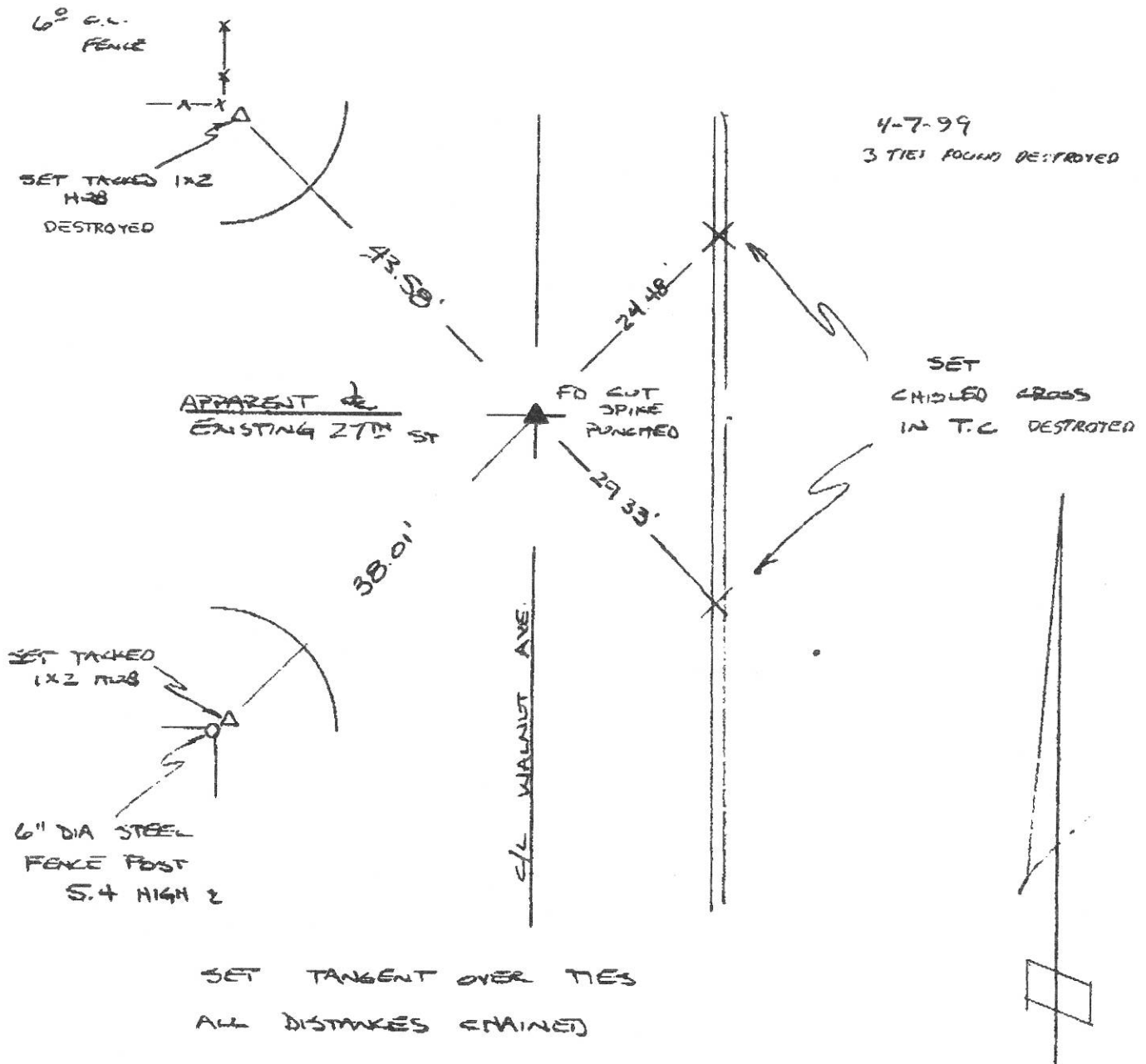


SURVEYED BY MADIGAN WASHICKODATE 11/2/98

ROBERT BEIN, WILLIAM FROST & ASSOCIATES
 PROFESSIONAL ENGINEERS, PLANNERS & SURVEYORS
 14735 ALTON PARKWAY, IRVINE, CA 92618-2060 • P.O. BOX 21007, IRVINE, CA 92610-7057
 TEL 949.722.5502 • FAX 949.472.6379

C/L TIES AT
 WALNUT & 27TH



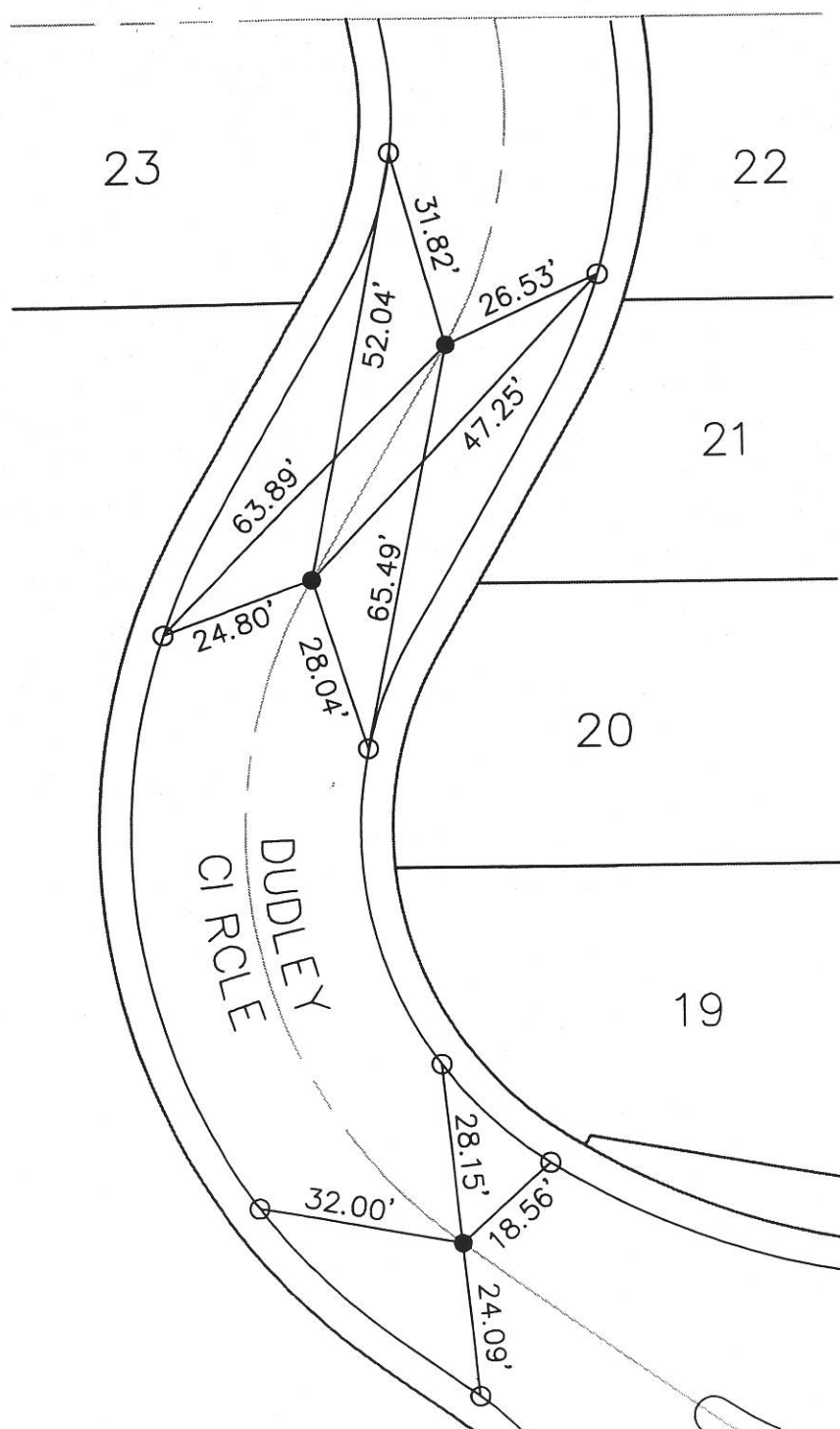
SURVEY OF: TRACT 51830 & 51830-1
 HALL & FOREMAN, INC. DUDLEY CIRCLE
 JOHN E. SOLLIE, P.L.S. 5749

PUBLIC WORKS DEPARTMENT
 CITY OF SIGNAL HILL, CALIFORNIA

LEGEND

● FOUND SPIKE & WASHER L.S. 5749 UNLESS OTHERWISE NOTED

○ SET LEAD AND TACK IN TOP OF CURB UNLESS OTHERWISE NOTED



1"=30'

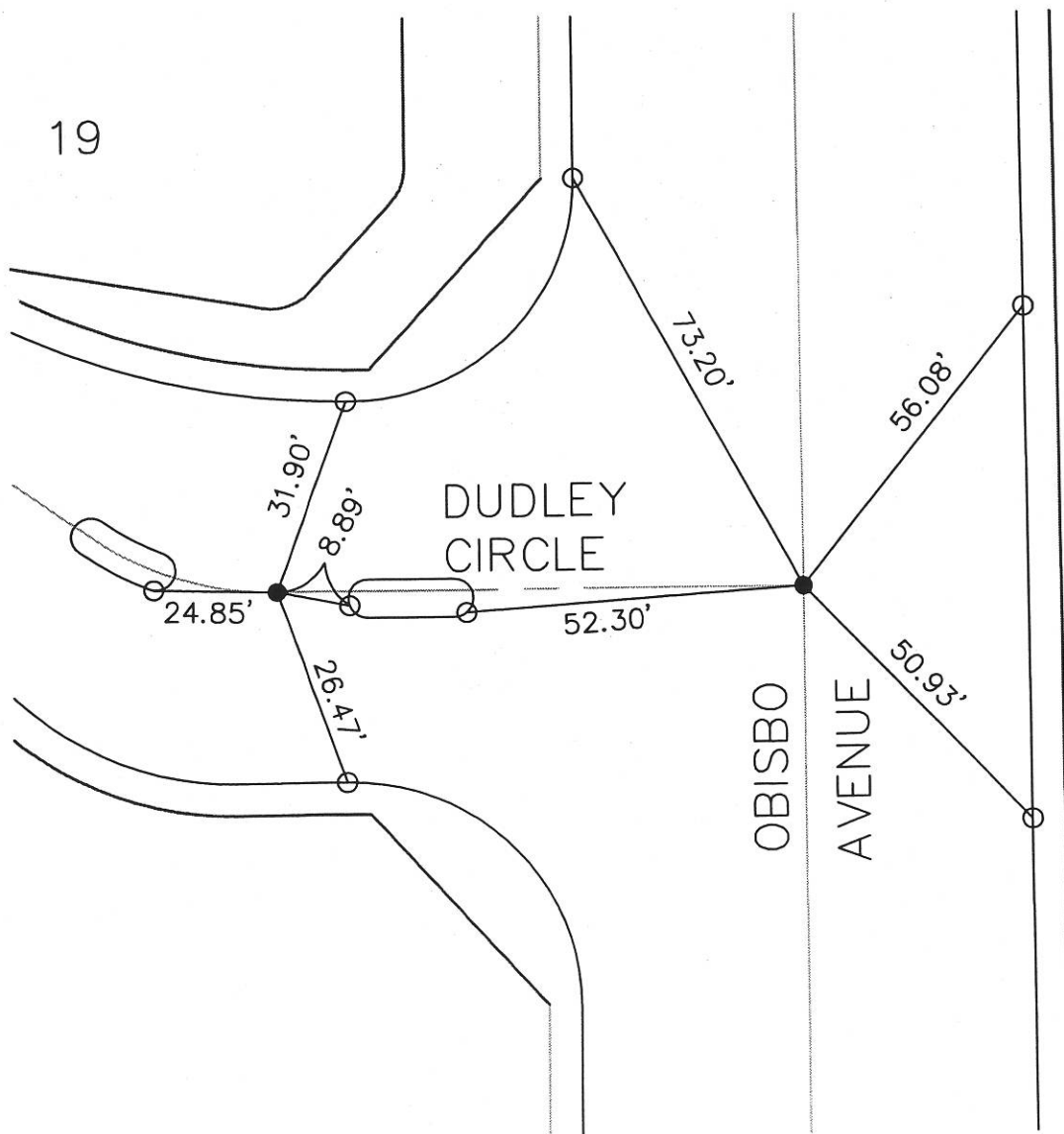
SURVEY OF: TRACT 51830 & 51830-1
HALL & FOREMAN, INC. DUDLEY CIRCLE & OBISBO AVE.
JOHN E. SOLLIE, P.L.S. 5749

PUBLIC WORKS DEPARTMENT
CITY OF SIGNAL HILL, CALIFORNIA

LEGEND

● FOUND SPIKE & WASHER L.S. 5749 UNLESS OTHERWISE NOTED

○ SET LEAD AND TACK IN TOP OF CURB UNLESS OTHERWISE NOTED



1"=30'

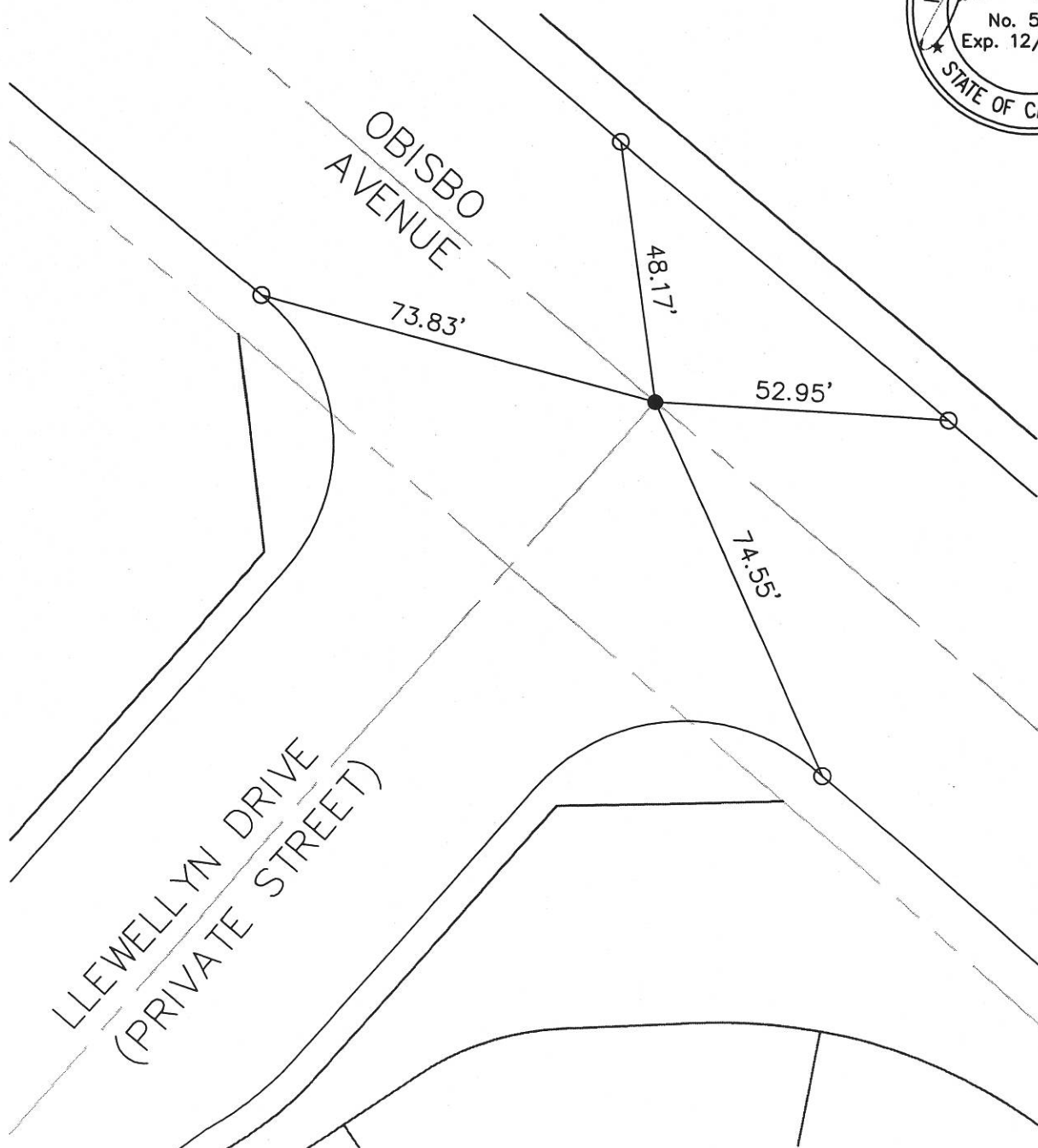
SURVEY OF: TRACT 51830 & 51830-1
HALL & FOREMAN, INC. LLEWELLYN DRIVE & OBISBO AVE.
JON E. SOLLIE, P.L.S. 5749

PUBLIC WORKS DEPARTMENT
CITY OF SIGNAL HILL, CALIFORNIA

LEGEND

● FOUND SPIKE & WASHER L.S. 5749 UNLESS OTHERWISE NOTED

○ SET LEAD AND TACK IN TOP OF CURB UNLESS OTHERWISE NOTED



1" = 30'

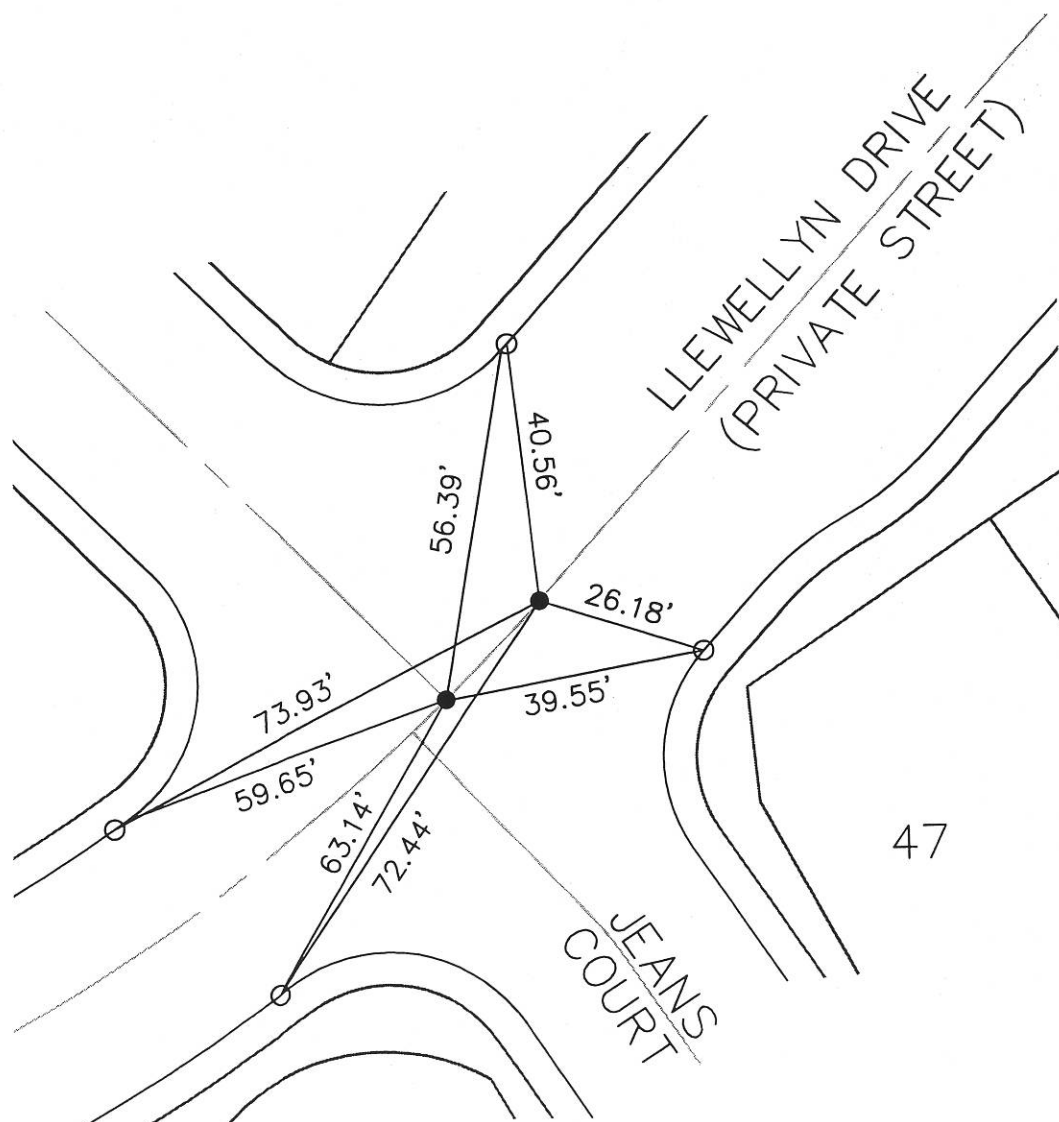
SURVEY OF: TRACT 51830 & 51830-1
HALL & FOREMAN, INC. LLEEWELLYN DRIVE & MAXSON COURT
J. J. E. SOLLIE, P.L.S. 5749

PUBLIC WORKS DEPARTMENT
CITY OF SIGNAL HILL, CALIFORNIA

LEGEND

● FOUND SPIKE & WASHER L.S. 5749 UNLESS OTHERWISE NOTED

○ SET LEAD AND TACK IN TOP OF CURB UNLESS OTHERWISE NOTED



1"=30'

SURVEY OF: TRACT 51830 & 51830-1
HALL & FOREMAN, INC. LLEWELLYN DRIVE & JEANS COURT
J. E. SOLLIE, P.L.S. 5749

PUBLIC WORKS DEPARTMENT
CITY OF SIGNAL HILL, CALIFORNIA

LEGEND

● FOUND SPIKE & WASHER L.S. 5749 UNLESS OTHERWISE NOTED

○ SET LEAD AND TACK IN TOP OF CURB UNLESS OTHERWISE NOTED



1"=30'

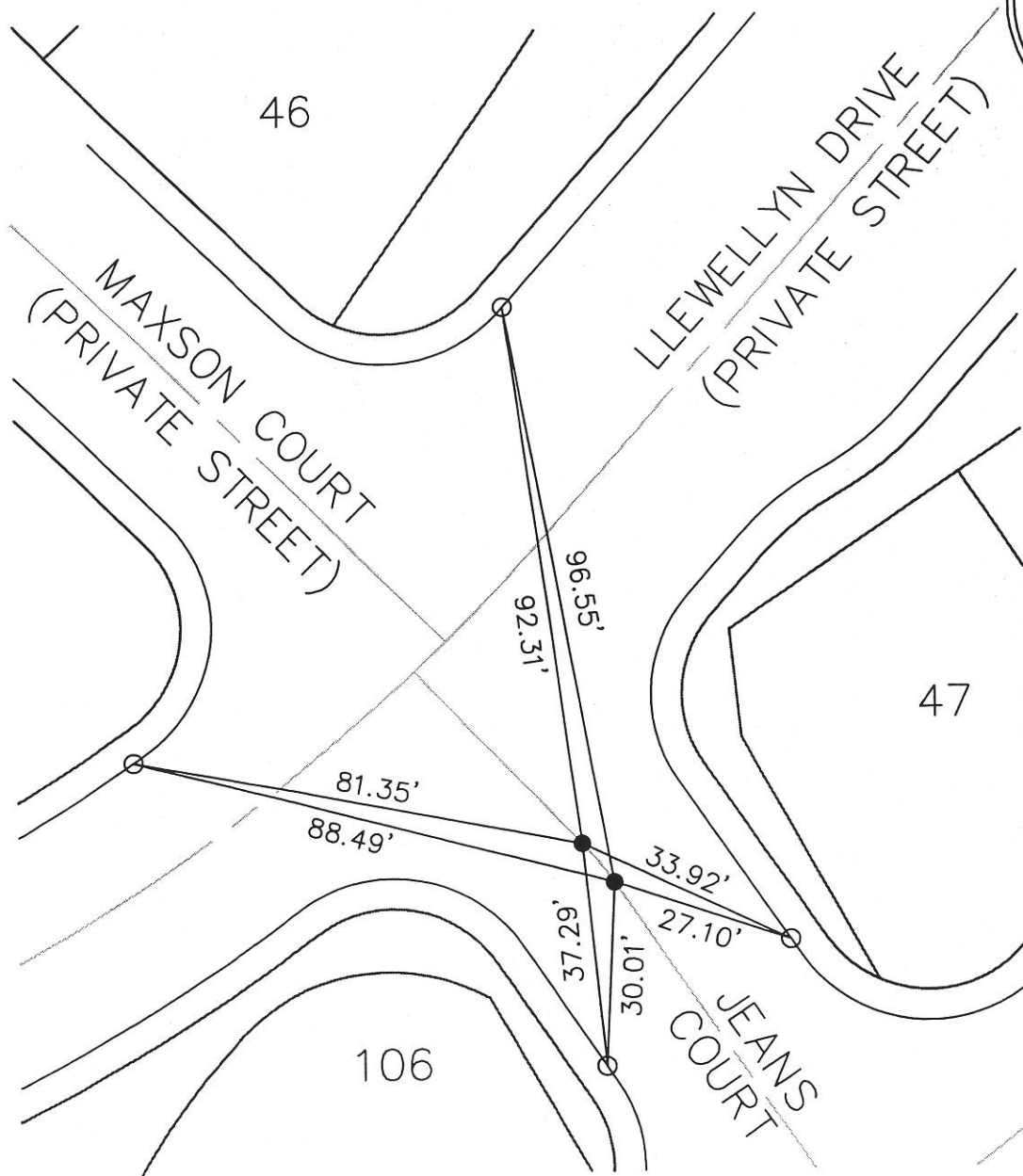
SURVEY OF: TRACT 51830 & 51830-1
HALL & FOREMAN, INC. JEANS COURT
JO. E. SOLLIE, P.L.S. 5749

PUBLIC WORKS DEPARTMENT
CITY OF SIGNAL HILL, CALIFORNIA

LEGEND

● FOUND SPIKE & WASHER L.S. 5749 UNLESS OTHERWISE NOTED

○ SET LEAD AND TACK IN TOP OF CURB UNLESS OTHERWISE NOTED



1"=30'

SURVEY OF: TRACT 51830 & 51830-1

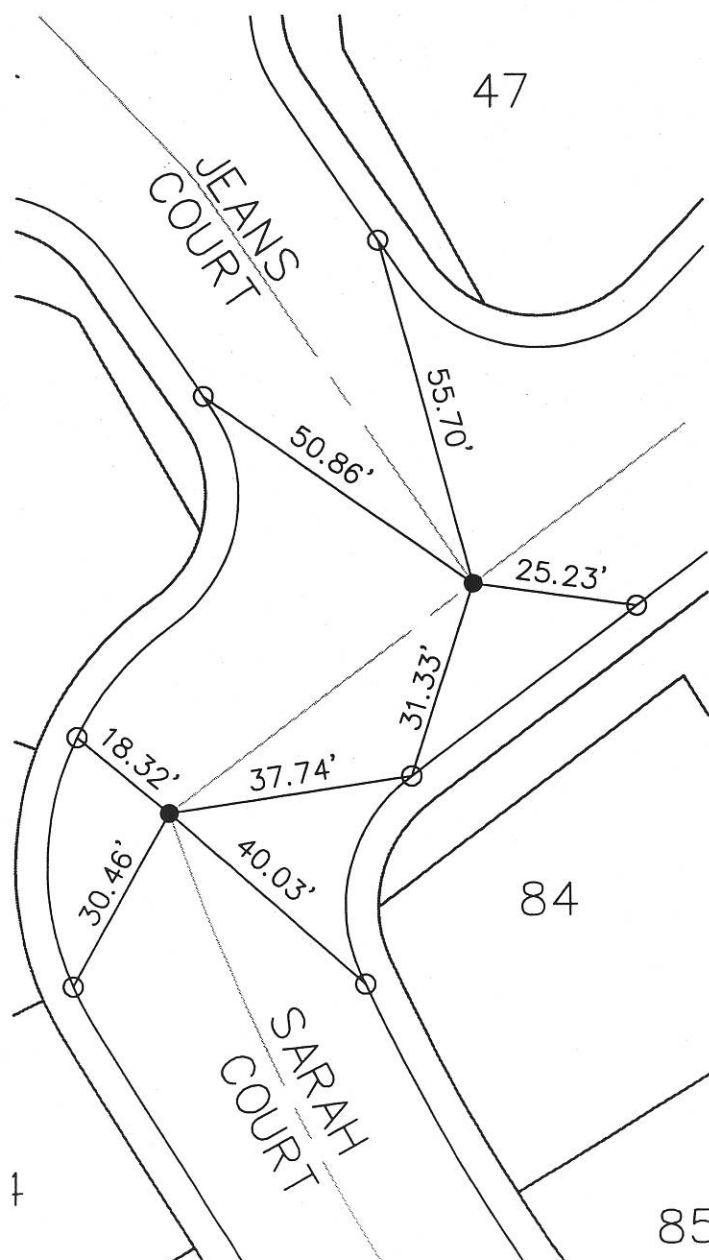
HALL & FOREMAN, INC. JEANS COURT & SARAH COURT

JON E. SOLLIE, P.L.S. 5749

PUBLIC WORKS DEPARTMENT
CITY OF SIGNAL HILL, CALIFORNIALEGEND

● FOUND SPIKE & WASHER L.S. 5749 UNLESS OTHERWISE NOTED

○ SET LEAD AND TACK IN TOP OF CURB UNLESS OTHERWISE NOTED



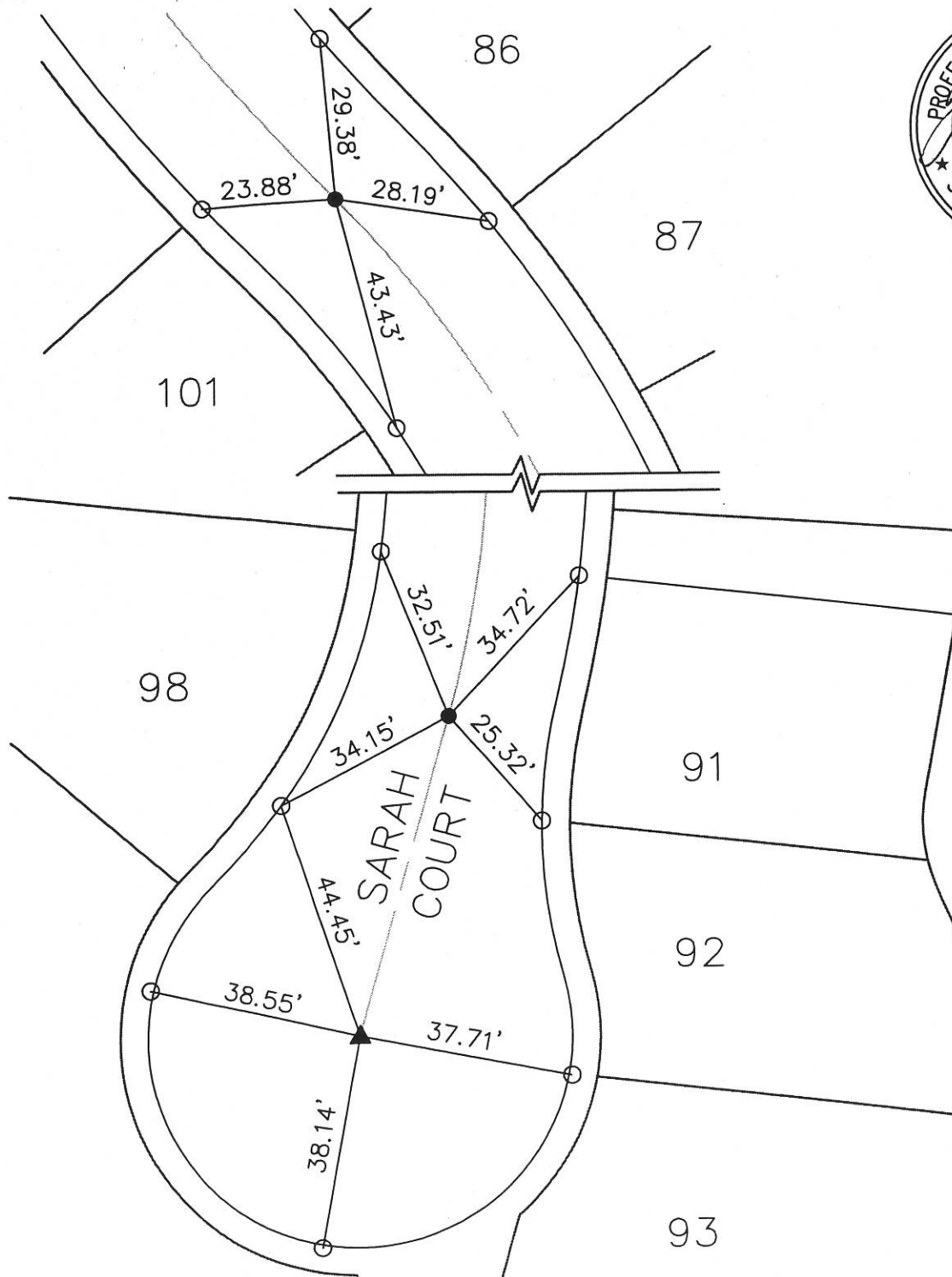
1"=30'

SURVEY OF: TRACT 51830 & 51830-1
 HALL & FOREMAN, INC. SARAH COURT
 JOE E. SOLLIE, P.L.S. 5749

PUBLIC WORKS DEPARTMENT
 CITY OF SIGNAL HILL, CALIFORNIA

LEGEND

- FOUND SPIKE & WASHER L.S. 5749 UNLESS OTHERWISE NOTED
- SET LEAD AND TACK IN TOP OF CURB UNLESS OTHERWISE NOTED
- ▲ SET LEAD AND TAG LS 5749 IN TOP OF CURB UNLESS OTHERWISE NOTED

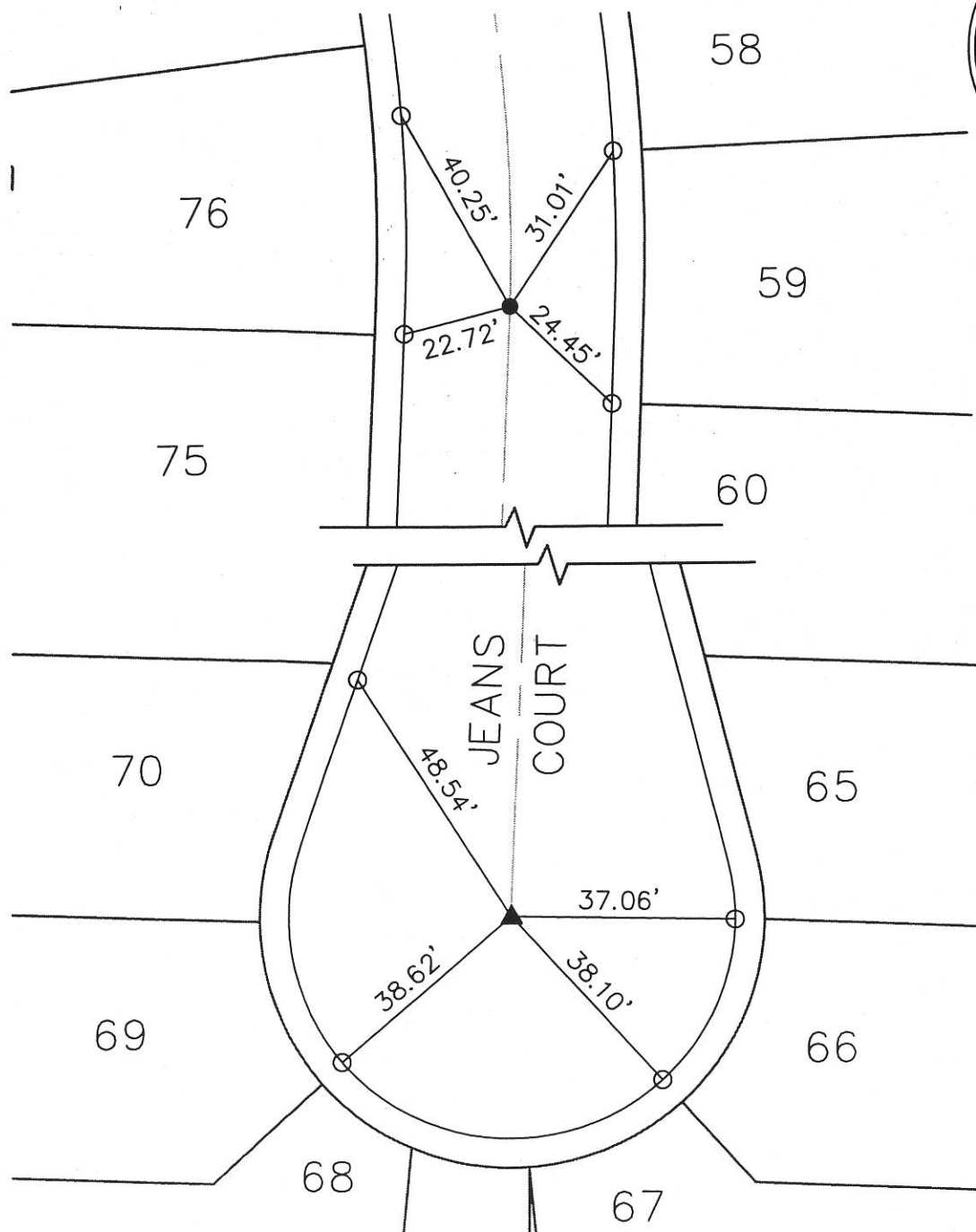
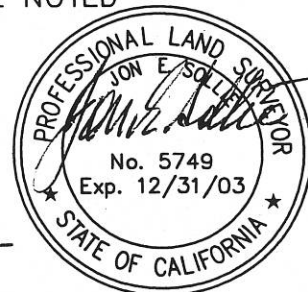


SURVEY OF: TRACT 51830 & 51830-1
 HALL & FOREMAN, INC. JEANS COURT
 JON E. SOLLIE, P.L.S. 5749

PUBLIC WORKS DEPARTMENT
 CITY OF SIGNAL HILL, CALIFORNIA

LEGEND

- FOUND SPIKE & WASHER L.S. 5749 UNLESS OTHERWISE NOTED
- SET LEAD AND TACK IN TOP OF CURB UNLESS OTHERWISE NOTED
- ▲ SET LEAD AND TAG LS 5749 IN TOP OF CURB UNLESS OTHERWISE NOTED



1"=30'

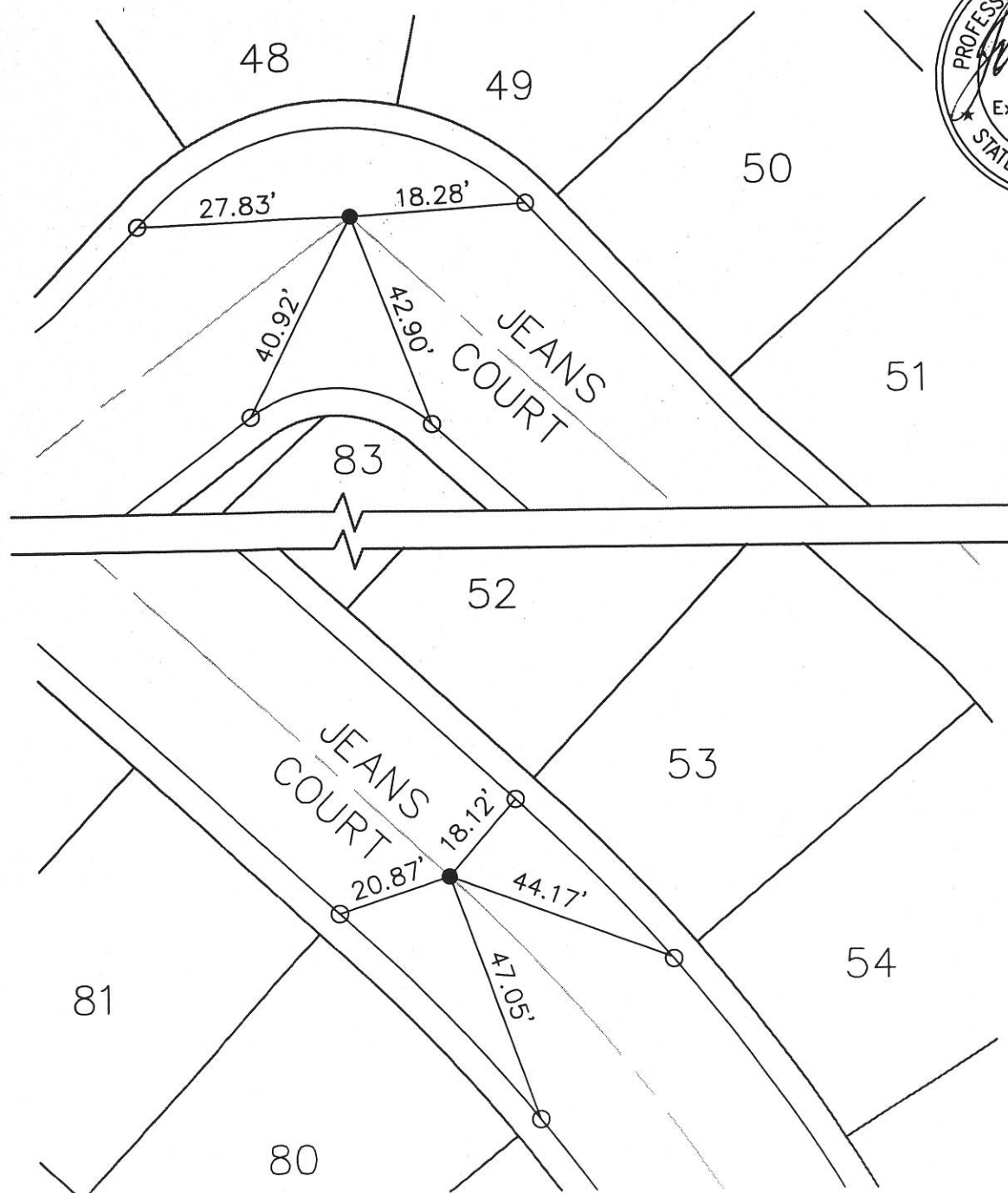
SURVEY OF: TRACT 51830 & 51830-1
 HALL & FOREMAN, INC. JEANS COURT
 JON E. SOLLIE, P.L.S. 5749

PUBLIC WORKS DEPARTMENT
 CITY OF SIGNAL HILL, CALIFORNIA

LEGEND

● FOUND SPIKE & WASHER L.S. 5749 UNLESS OTHERWISE NOTED

○ SET LEAD AND TACK IN TOP OF CURB UNLESS OTHERWISE NOTED

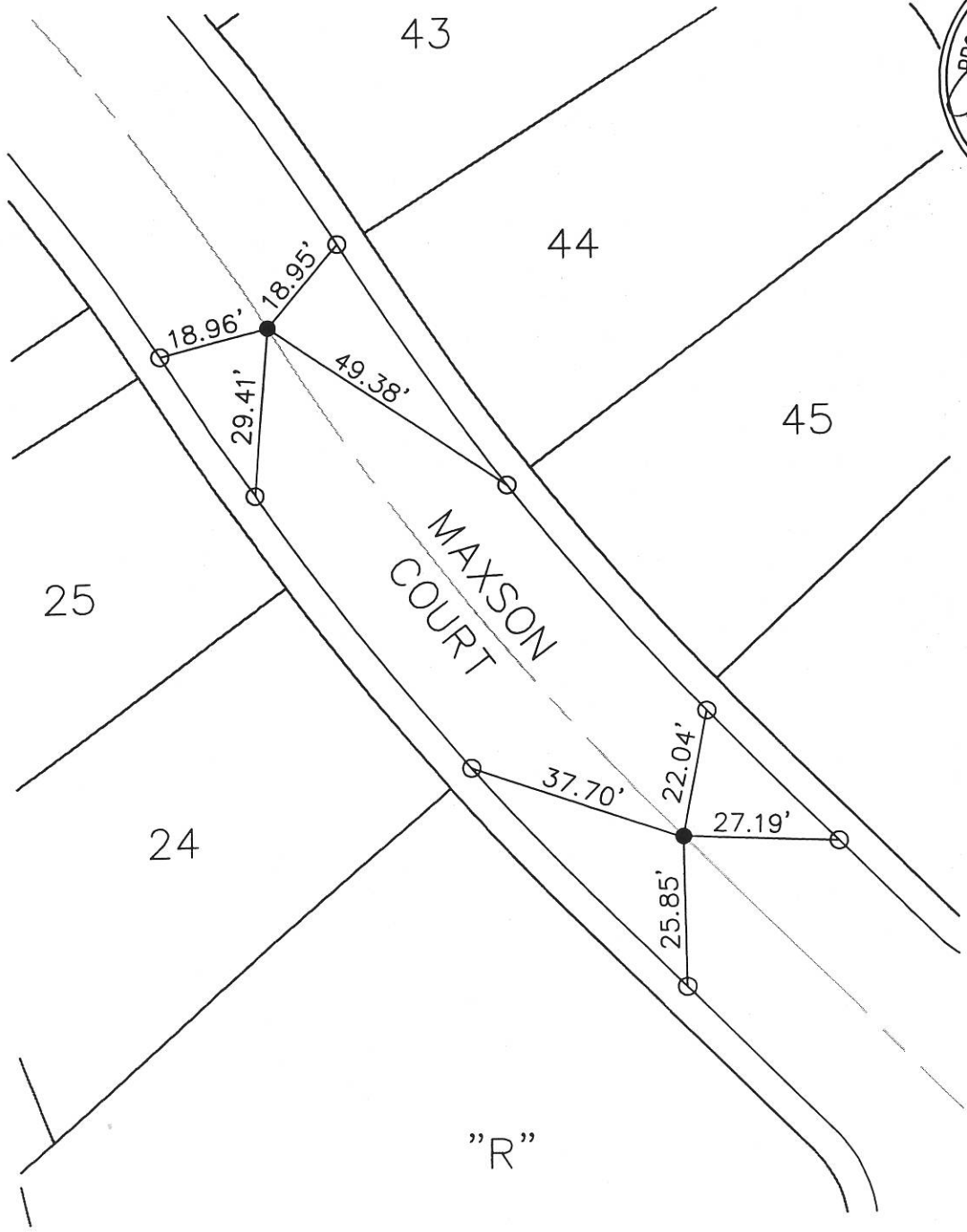


SURVEY OF: TRACT 51830 & 51830-1
HALL & FOREMAN, INC. MAXSON COURT
JO E. SOLLIE, P.L.S. 5749

PUBLIC WORKS DEPARTMENT
CITY OF SIGNAL HILL, CALIFORNIA

LEGEND

- FOUND SPIKE & WASHER L.S. 5749 UNLESS OTHERWISE NOTED
- SET LEAD AND TACK IN TOP OF CURB UNLESS OTHERWISE NOTED



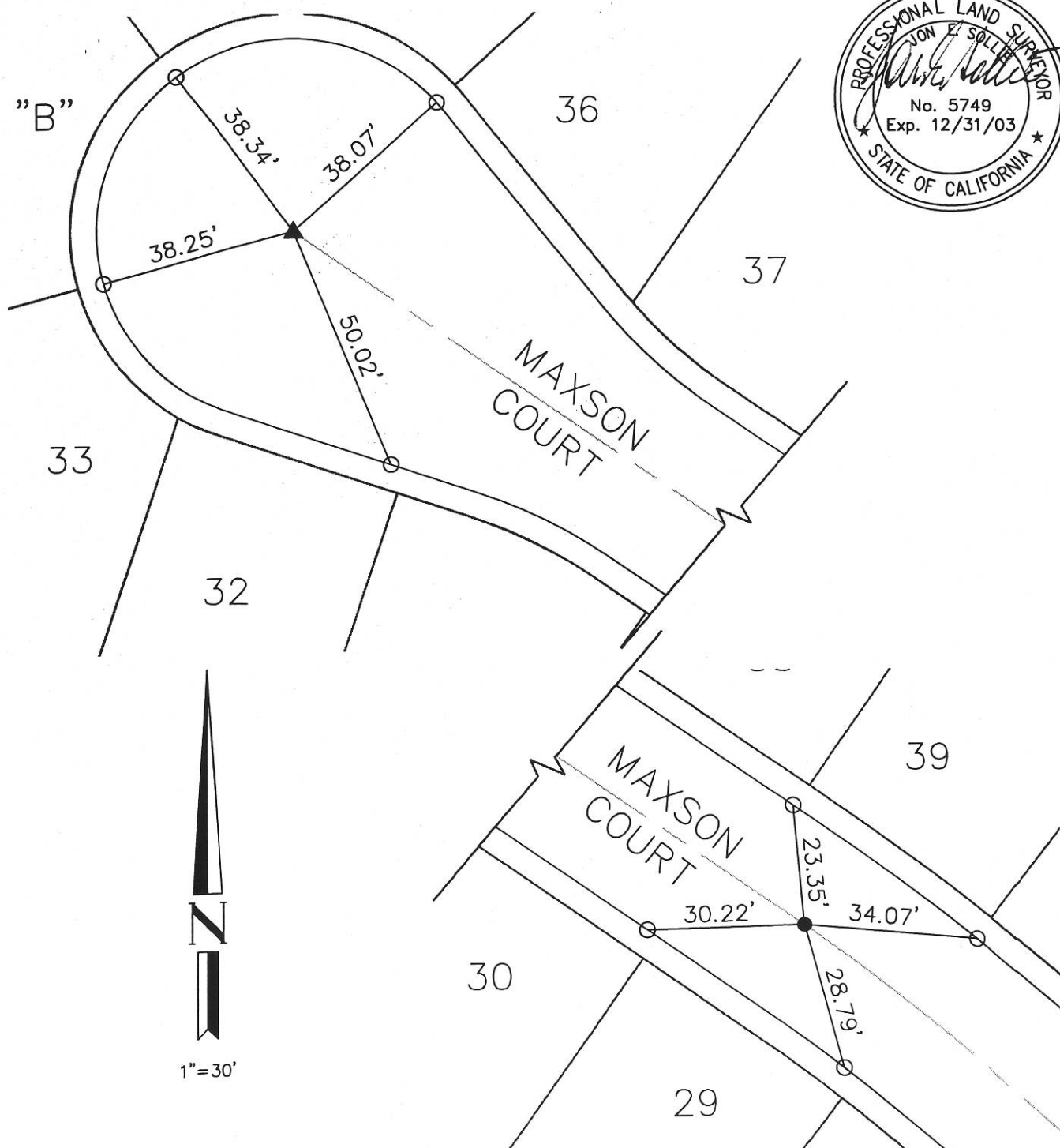
1"=30'

SURVEY OF: TRACT 51830 & 51830-1
 HALL & FOREMAN, INC. MAXON COURT
 J. I. E. SOLLIE, P.L.S. 5749

PUBLIC WORKS DEPARTMENT
 CITY OF SIGNAL HILL, CALIFORNIA

LEGEND

- FOUND SPIKE & WASHER L.S. 5749 UNLESS OTHERWISE NOTED
- SET LEAD AND TACK IN TOP OF CURB UNLESS OTHERWISE NOTED
- ▲ SET LEAD AND TAG LS 5749 IN TOP OF CURB UNLESS OTHERWISE NOTED



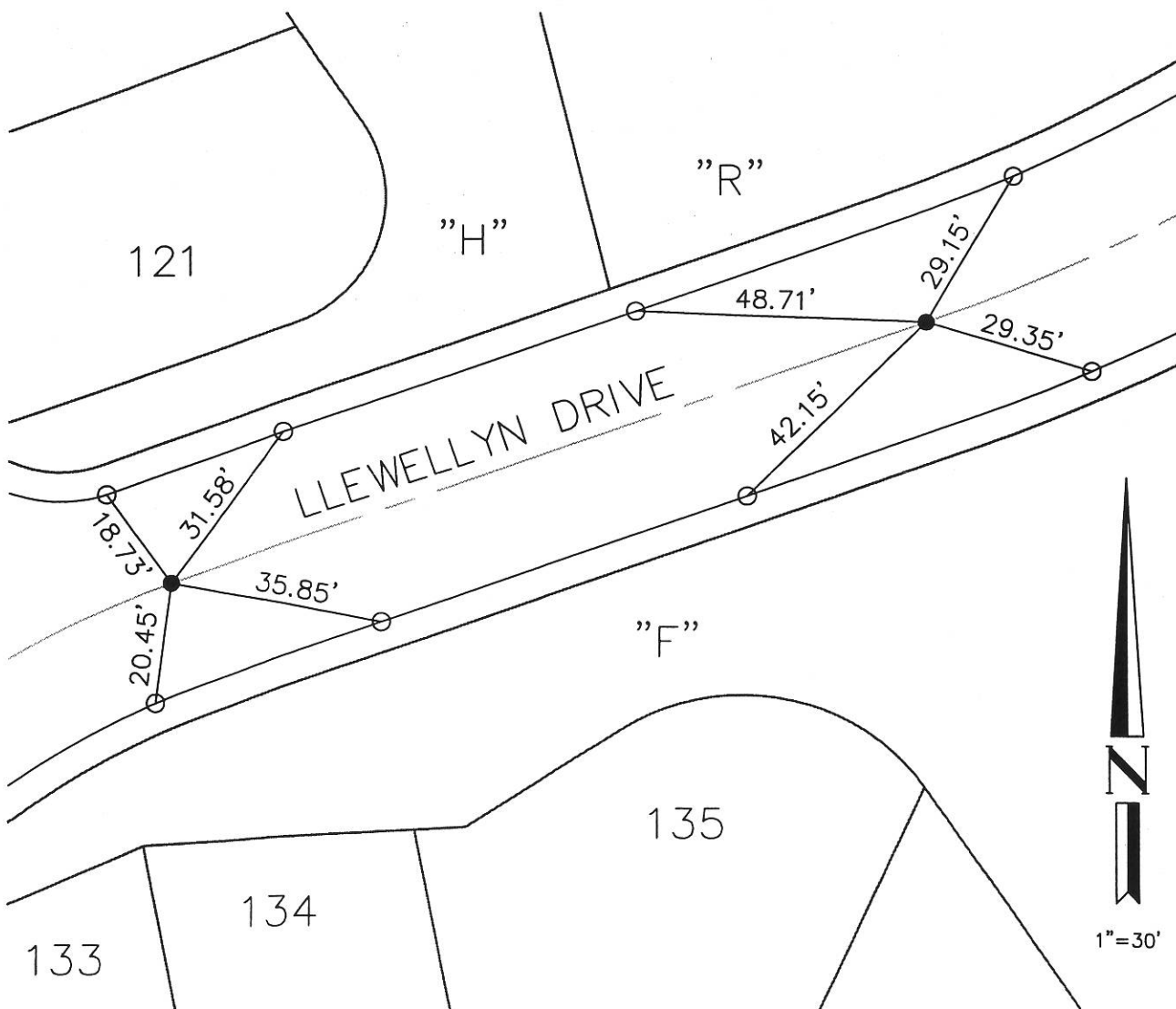
SURVEY OF: TRACT 51830 & 51830-1
HALL & FOREMAN, INC. LLEWELLYN DRIVE
JON E. SOLLIE, P.L.S. 5749

PUBLIC WORKS DEPARTMENT
CITY OF SIGNAL HILL, CALIFORNIA

LEGEND

● FOUND SPIKE & WASHER L.S. 5749 UNLESS OTHERWISE NOTED

○ SET LEAD AND TACK IN TOP OF CURB UNLESS OTHERWISE NOTED



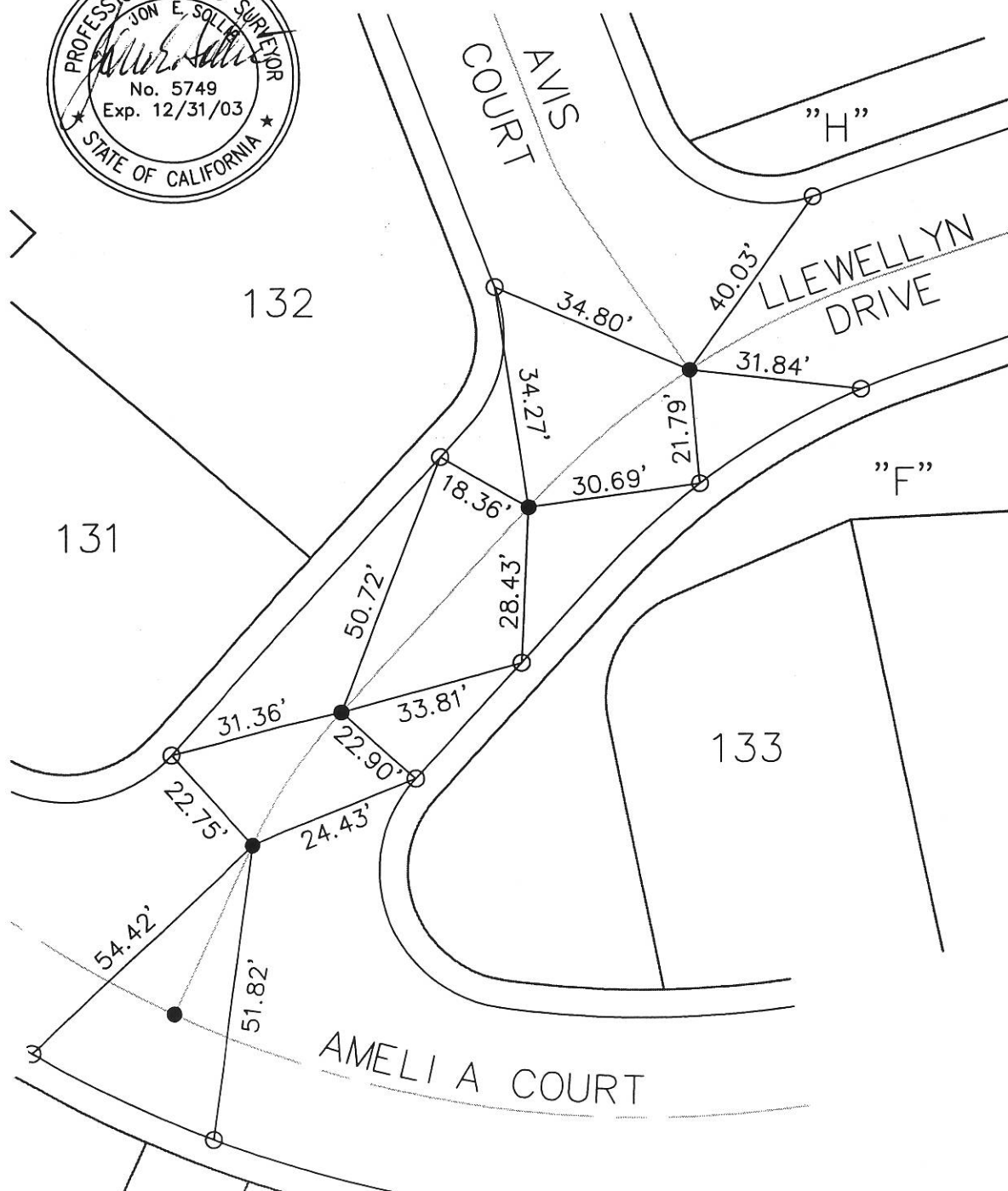
SURVEY OF: TRACT 51830 & 51830-1
 HALL & FOREMAN, INC. LLEWELLYN DRIVE
 JON E. SOLLIE, P.L.S. 5749

PUBLIC WORKS DEPARTMENT
 CITY OF SIGNAL HILL, CALIFORNIA

LEGEND

● FOUND SPIKE & WASHER L.S. 5749 UNLESS OTHERWISE NOTED

○ SET LEAD AND TACK IN TOP OF CURB UNLESS OTHERWISE NOTED



1"=30'

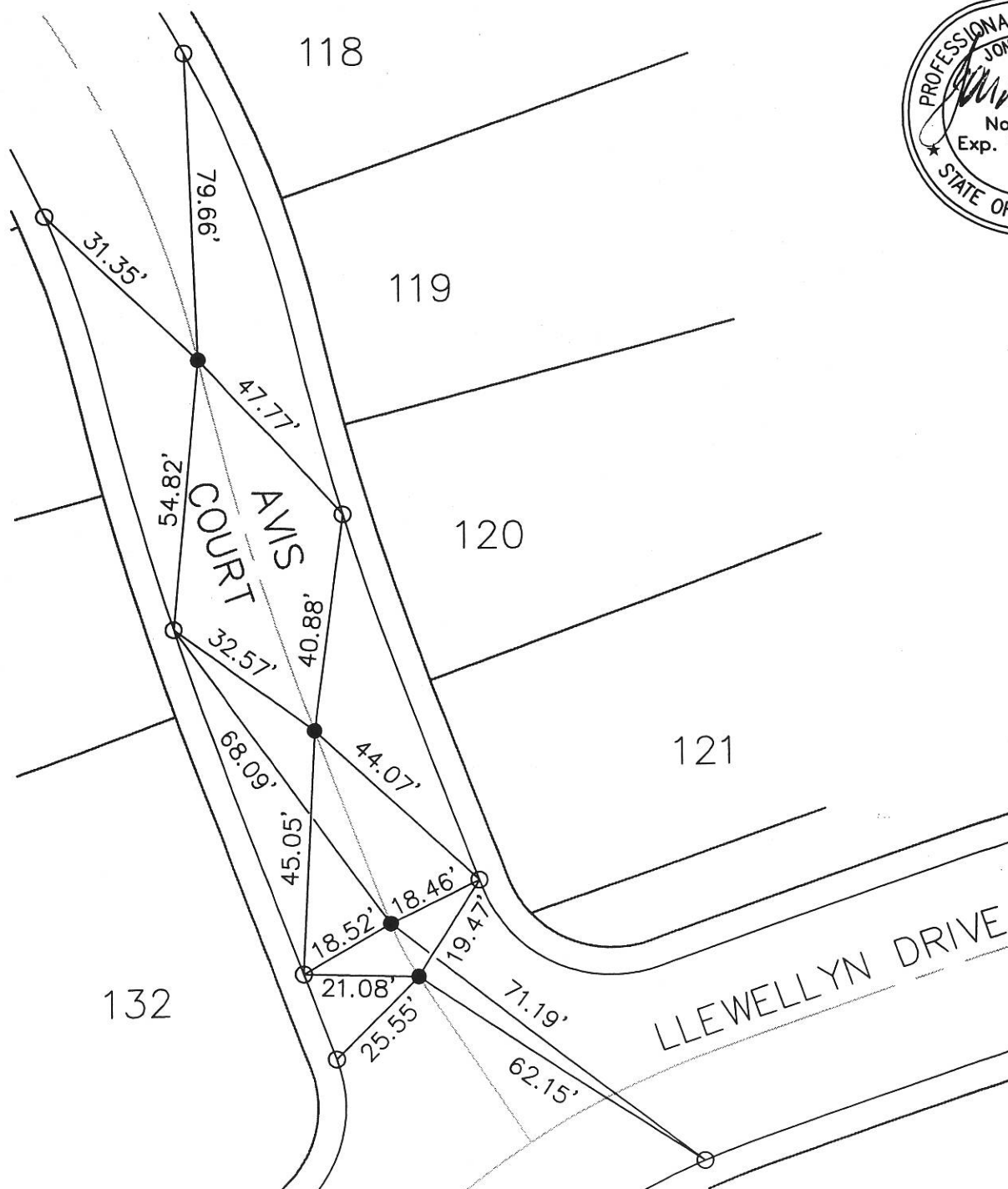
SURVEY OF: TRACT 51830 & 51830-1
 HALL & FOREMAN, INC. AVIS COURT
 JOHN E. SOLLIE, P.L.S. 5749

PUBLIC WORKS DEPARTMENT
 CITY OF SIGNAL HILL, CALIFORNIA

LEGEND

● FOUND SPIKE & WASHER L.S. 5749 UNLESS OTHERWISE NOTED

○ SET LEAD AND TACK IN TOP OF CURB UNLESS OTHERWISE NOTED

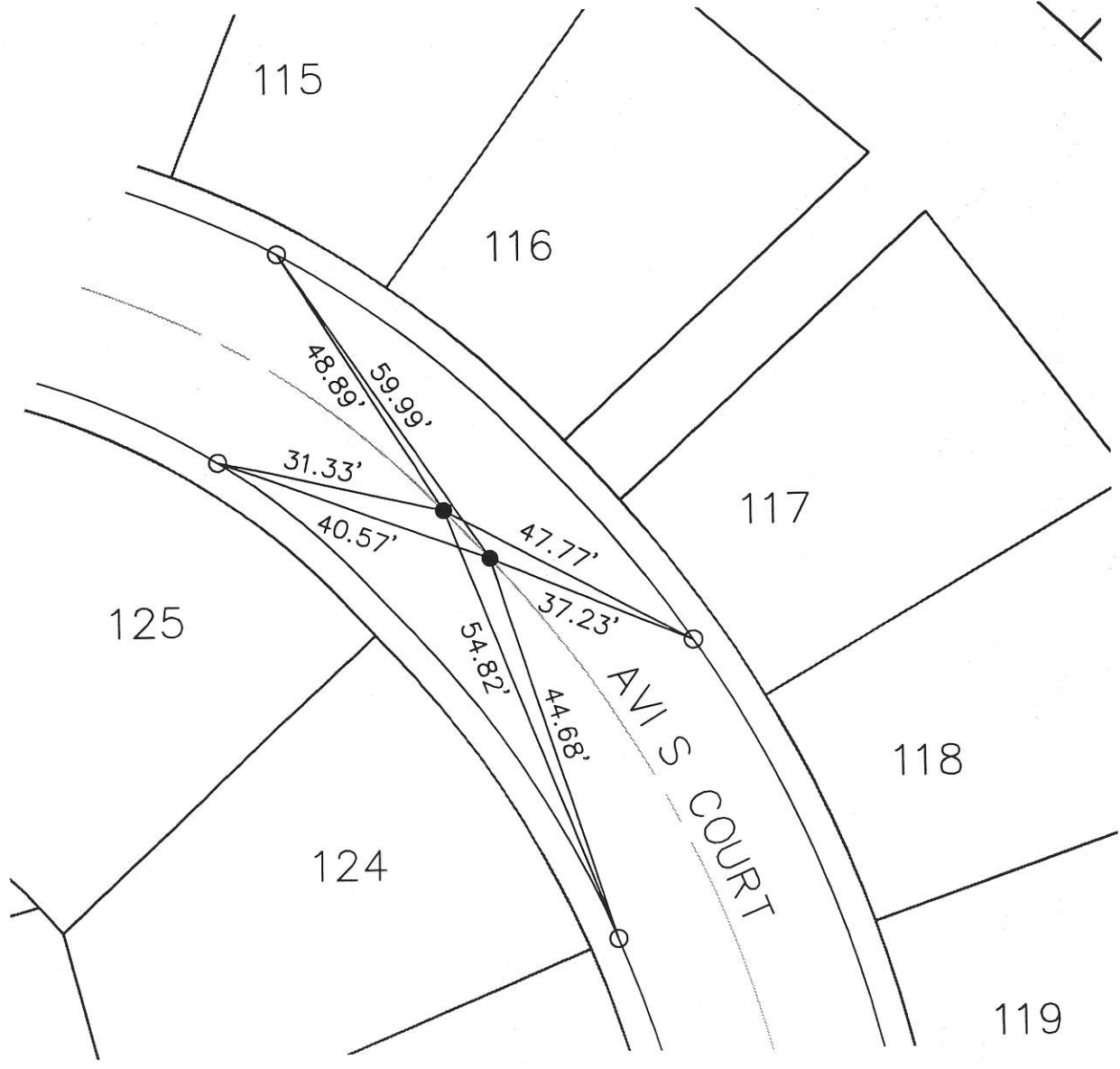


SURVEY OF: TRACT 51830 & 51830-1
 HALL & FOREMAN, INC. AVIS COURT
 J.C. E. SOLLIE, P.L.S. 5749

PUBLIC WORKS DEPARTMENT
 CITY OF SIGNAL HILL, CALIFORNIA

LEGEND

- FOUND SPIKE & WASHER L.S. 5749 UNLESS OTHERWISE NOTED
- SET LEAD AND TACK IN TOP OF CURB UNLESS OTHERWISE NOTED



1" = 30'

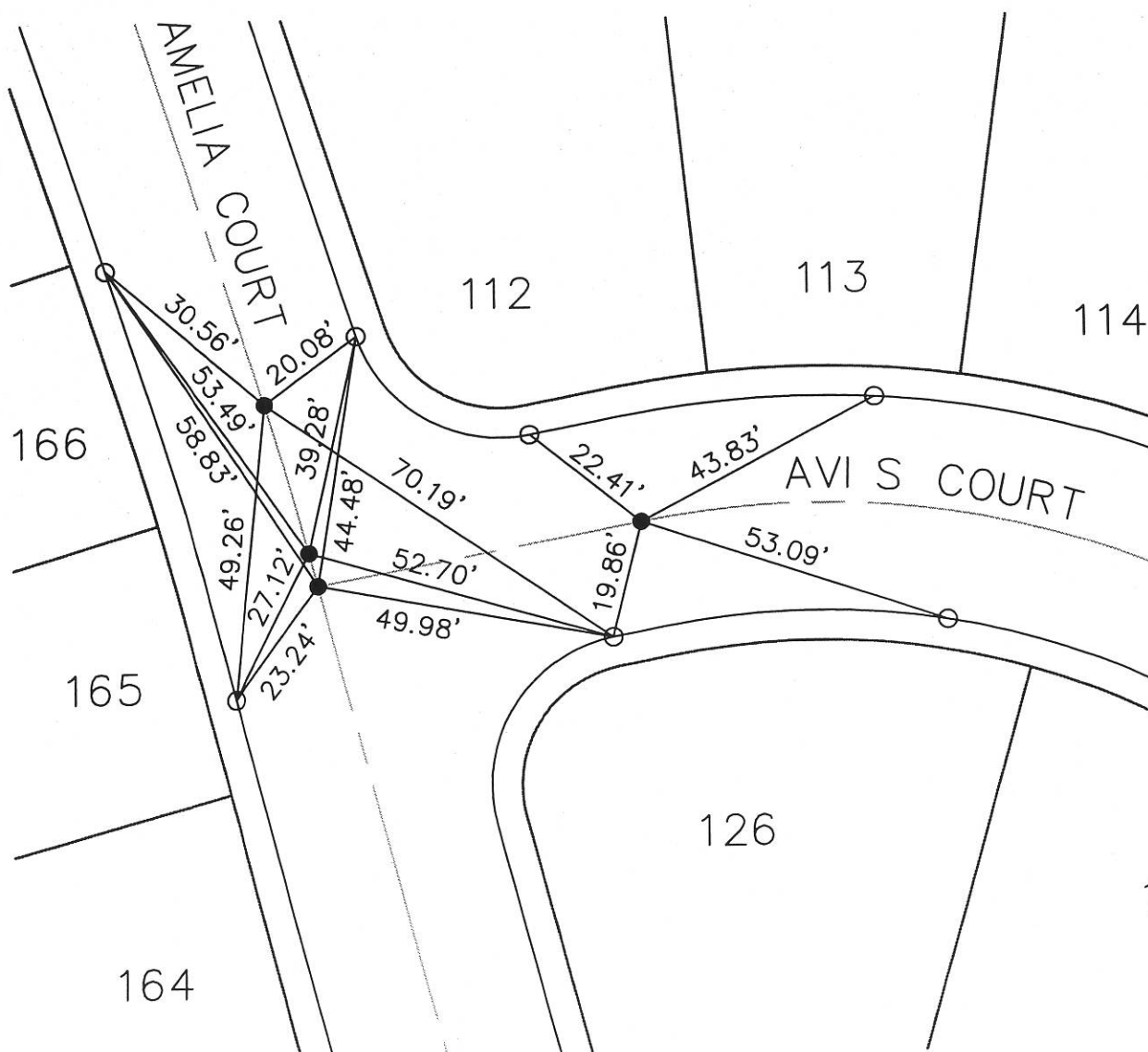
SURVEY OF: TRACT 51830 & 51830-1
 HALL & FOREMAN, INC. AMELIA COURT
 JOHN E. SOLLIE, P.L.S. 5749

PUBLIC WORKS DEPARTMENT
 CITY OF SIGNAL HILL, CALIFORNIA

LEGEND

● FOUND SPIKE & WASHER L.S. 5749 UNLESS OTHERWISE NOTED

○ SET LEAD AND TACK IN TOP OF CURB UNLESS OTHERWISE NOTED

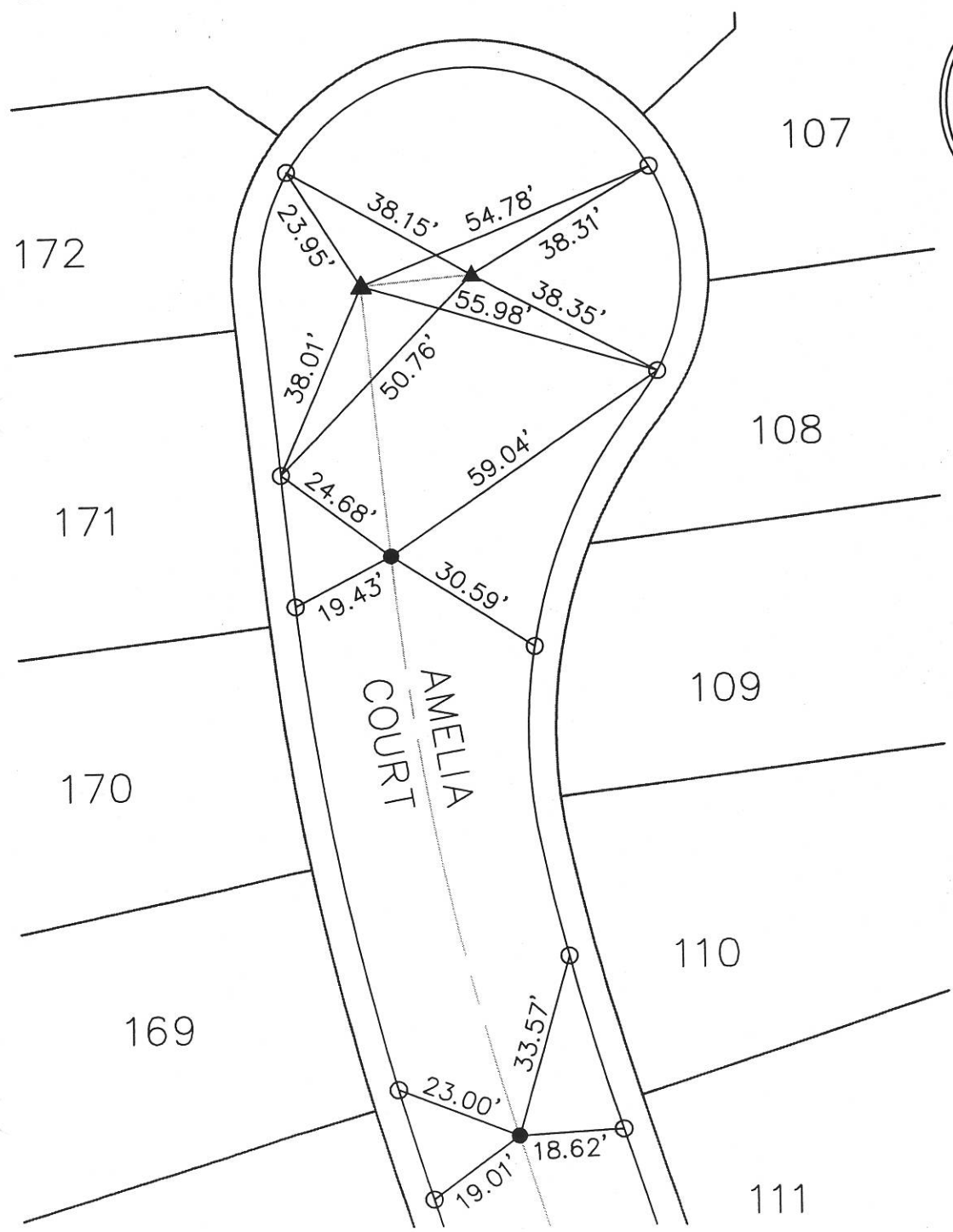
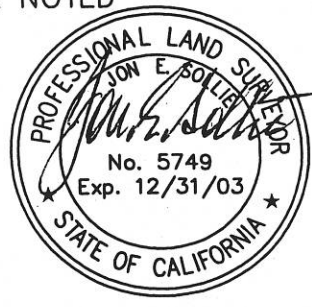


SURVEY OF: TRACT 51830 & 51830-1
HALL & FOREMAN, INC. AMELIA COURT
JOHN E. SOLLIE, P.L.S. 5749

PUBLIC WORKS DEPARTMENT
CITY OF SIGNAL HILL, CALIFORNIA

LEGEND

- FOUND SPIKE & WASHER L.S. 5749 UNLESS OTHERWISE NOTED
- SET LEAD AND TACK IN TOP OF CURB UNLESS OTHERWISE NOTED
- ▲ SET LEAD AND TAG LS 5749 IN TOP OF CURB UNLESS OTHERWISE NOTED



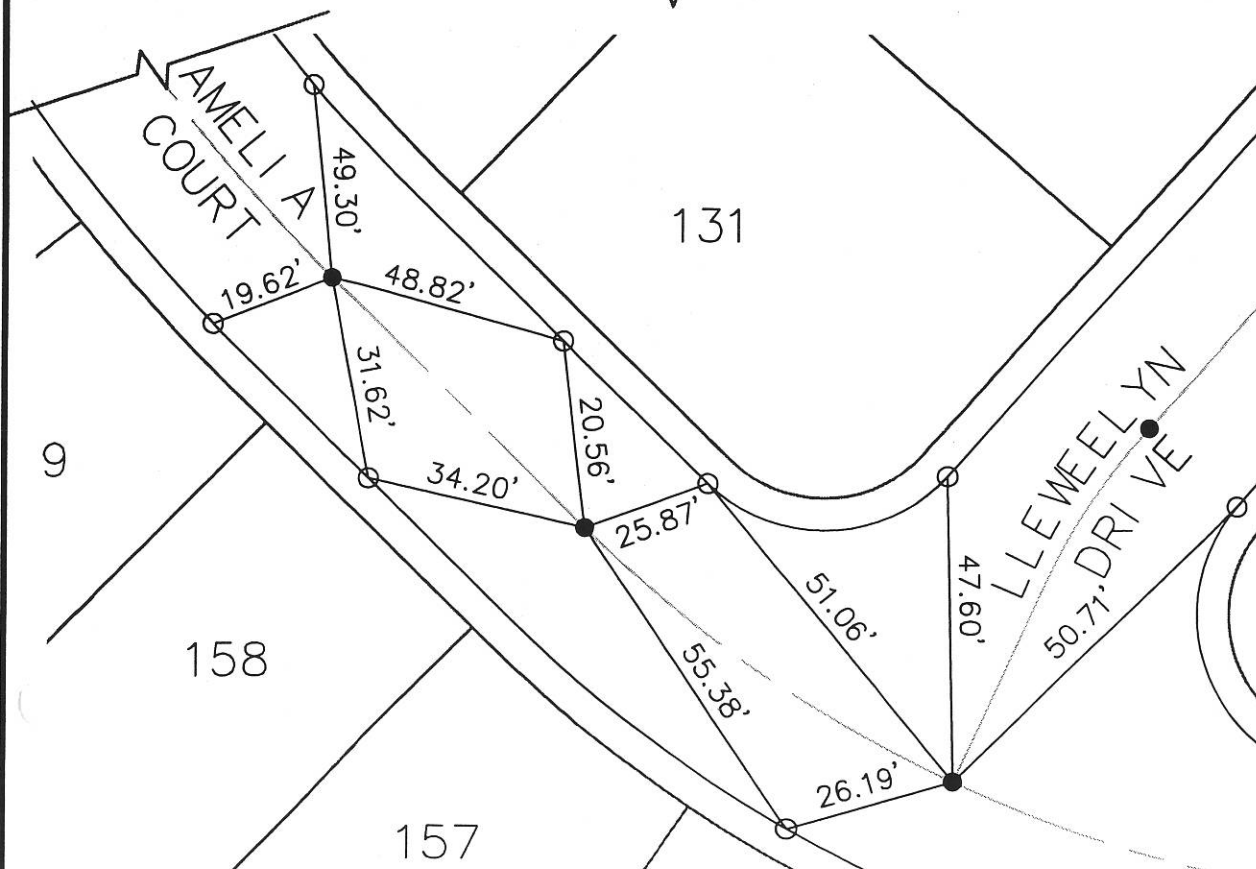
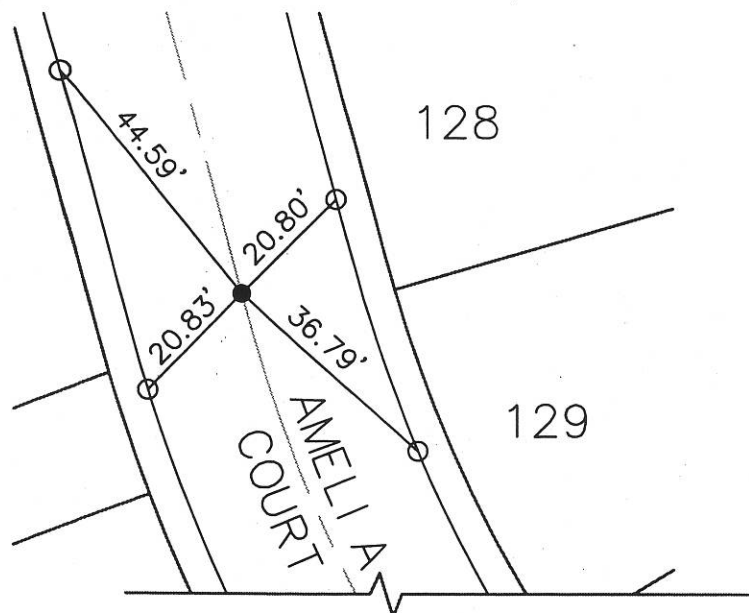
SURVEY OF: TRACT 51830 & 51830-1
 HALL & FOREMAN, INC. AMELIA COURT
 JON E. SOLLIE, P.L.S. 5749

PUBLIC WORKS DEPARTMENT
 CITY OF SIGNAL HILL, CALIFORNIA

LEGEND

● FOUND SPIKE & WASHER L.S. 5749 UNLESS OTHERWISE NOTED

○ SET LEAD AND TACK IN TOP OF CURB UNLESS OTHERWISE NOTED



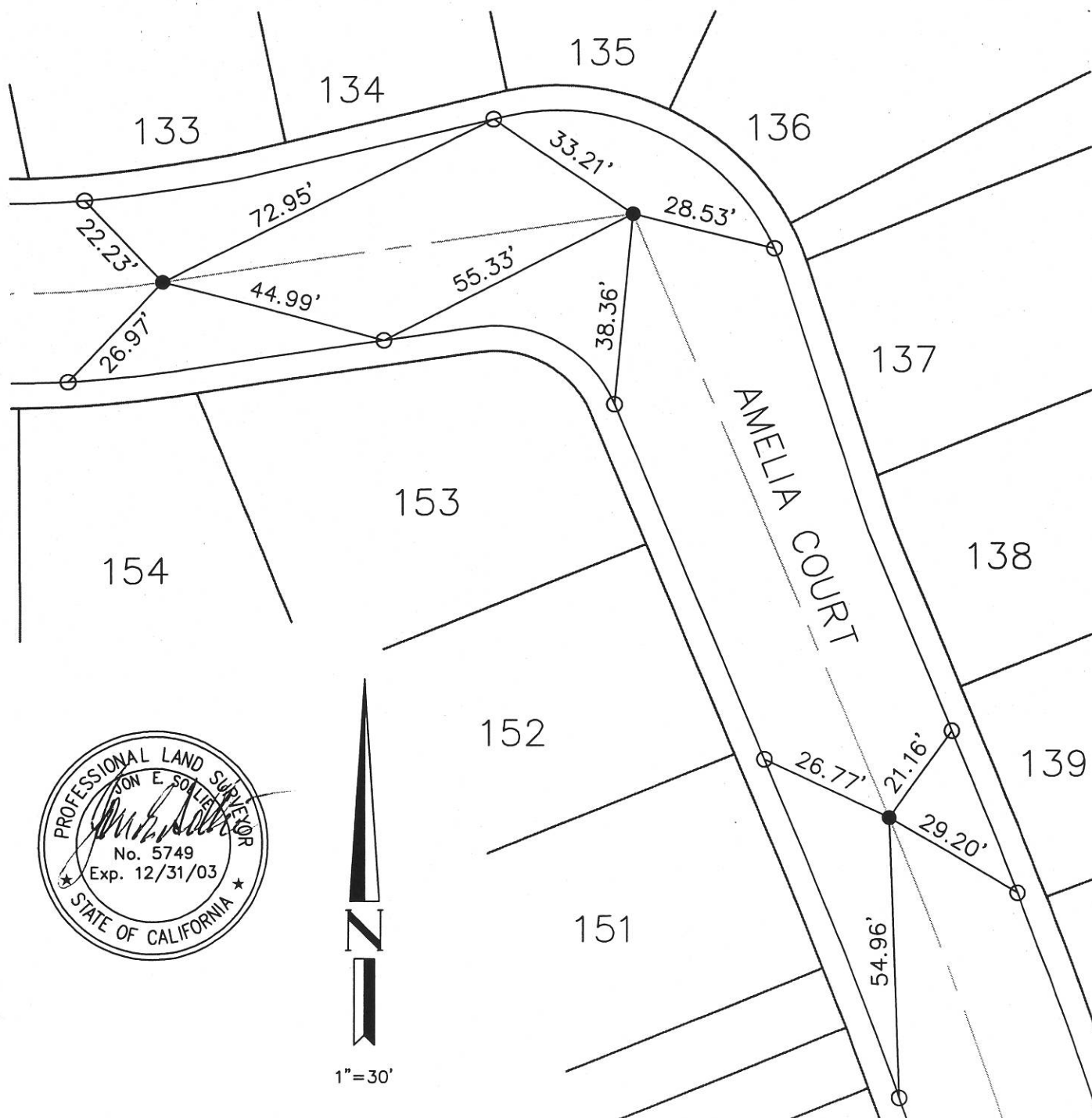
SURVEY OF: TRACT 51830 & 51830-1
 HALL & FOREMAN, INC. AMELIA COURT
 JON E. SOLLIE, P.L.S. 5749

PUBLIC WORKS DEPARTMENT
 CITY OF SIGNAL HILL, CALIFORNIA

LEGEND

● FOUND SPIKE & WASHER L.S. 5749 UNLESS OTHERWISE NOTED

○ SET LEAD AND TACK IN TOP OF CURB UNLESS OTHERWISE NOTED

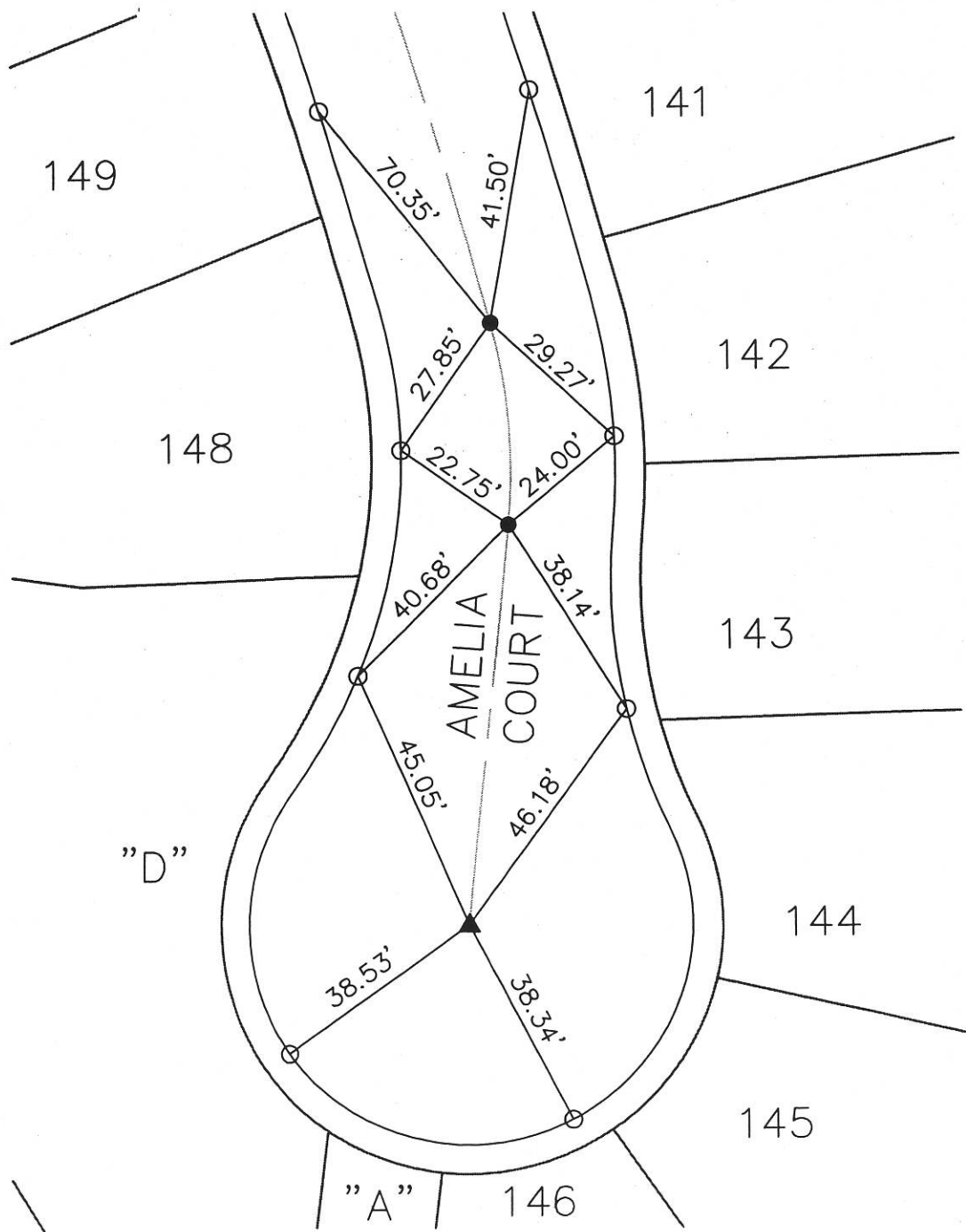
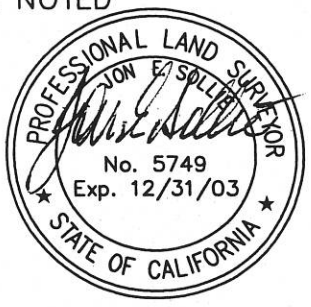


SURVEY OF: TRACT 51830 & 51830-1
HALL & FOREMAN, INC. AMELIA COURT
JON E. SOLLIE, P.L.S. 5749

PUBLIC WORKS DEPARTMENT
CITY OF SIGNAL HILL, CALIFORNIA

LEGEND

- FOUND SPIKE & WASHER L.S. 5749 UNLESS OTHERWISE NOTED
- SET LEAD AND TACK IN TOP OF CURB UNLESS OTHERWISE NOTED
- ▲ SET LEAD AND TAG LS 5749 IN TOP OF CURB UNLESS OTHERWISE NOTED



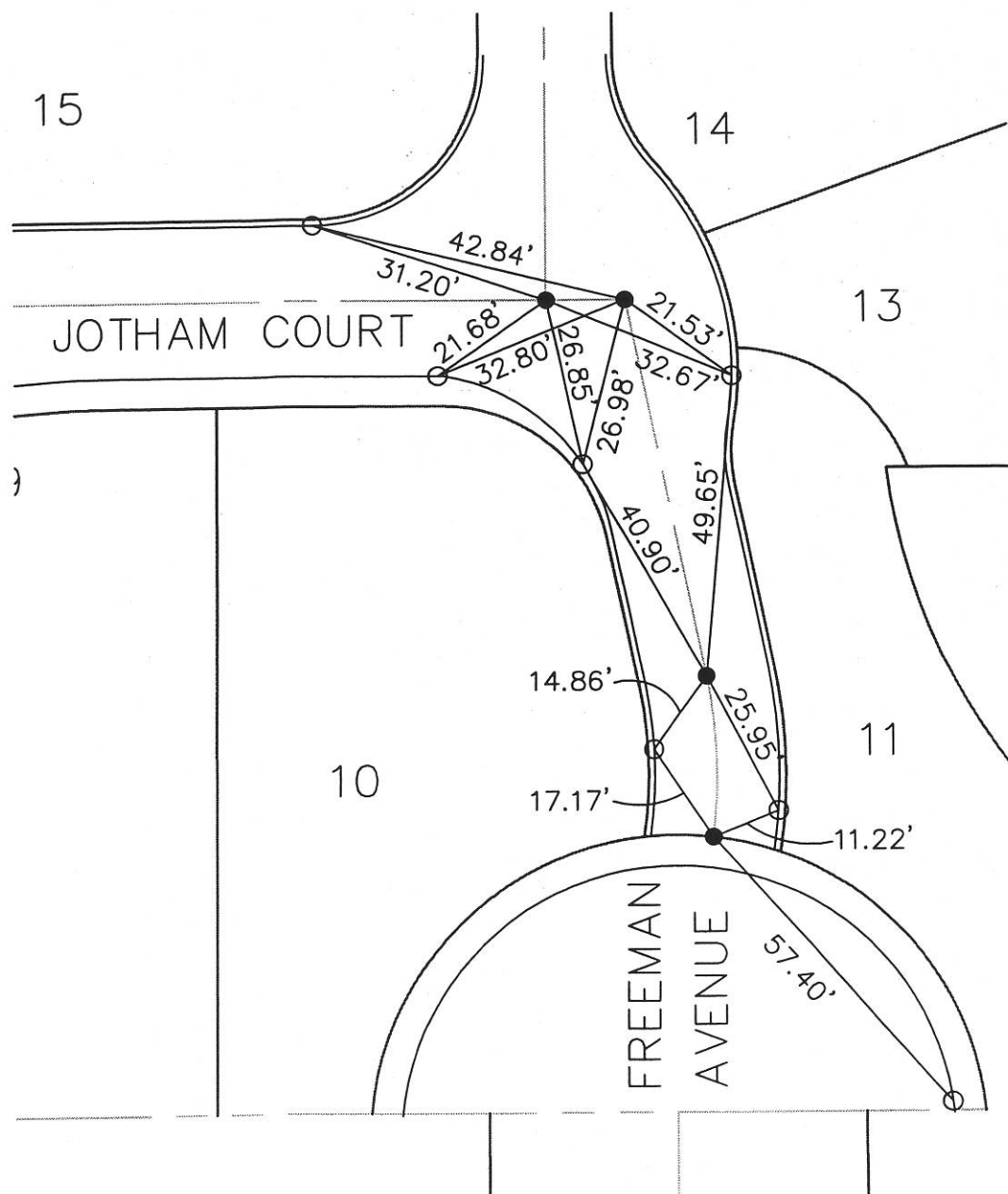
SURVEY OF: TRACT 51830 & 51830-1
 HALL & FOREMAN, INC. JOTHAM COURT
 JON E. SOLLIE, P.L.S. 5749

PUBLIC WORKS DEPARTMENT
 CITY OF SIGNAL HILL, CALIFORNIA

LEGEND

● FOUND SPIKE & WASHER L.S. 5749 UNLESS OTHERWISE NOTED

○ SET LEAD AND TACK IN TOP OF CURB UNLESS OTHERWISE NOTED



1"=30'

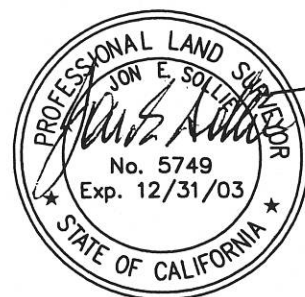
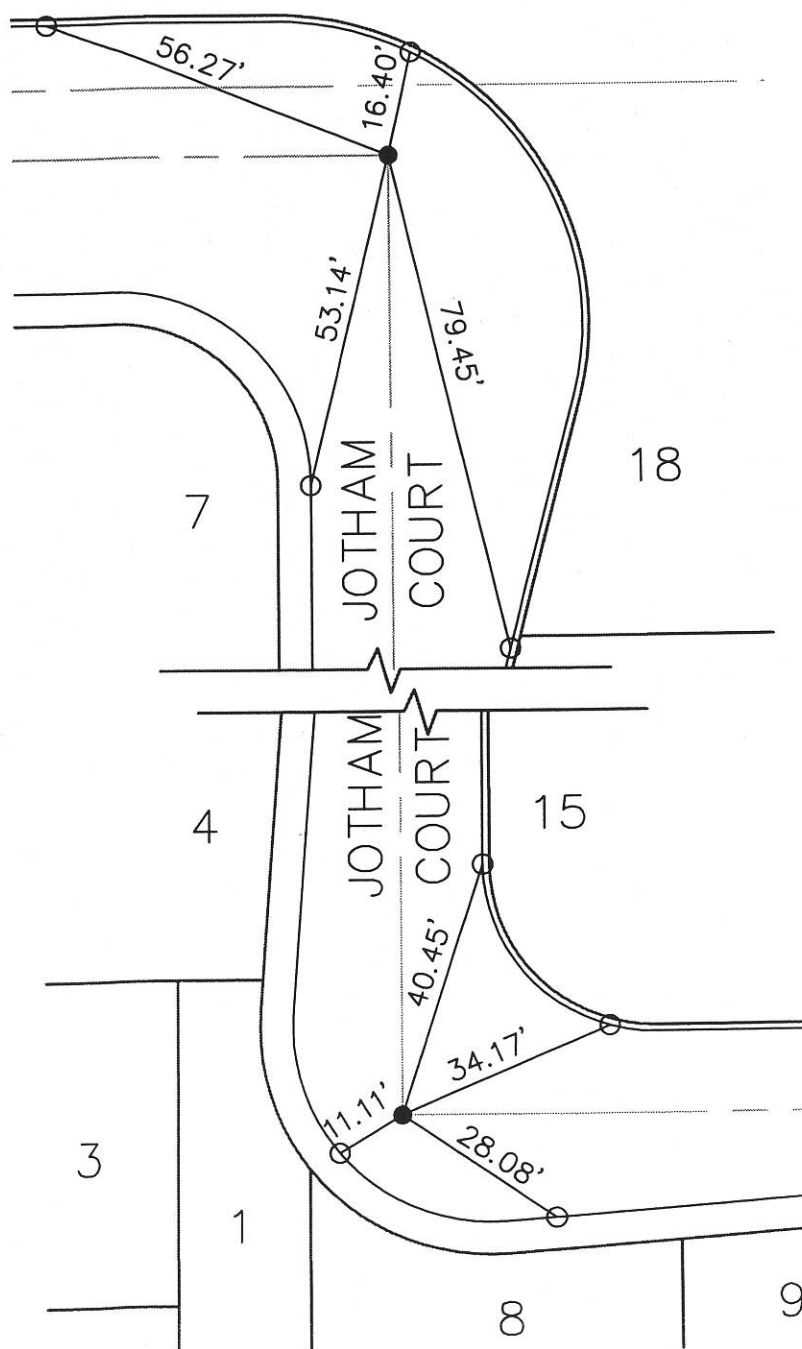
SURVEY OF: TRACT 51830 & 51830-1
 HALL & FOREMAN, INC. JOTHAM COURT
 JOHN E. SOLLIE, P.L.S. 5749

PUBLIC WORKS DEPARTMENT
 CITY OF SIGNAL HILL, CALIFORNIA

LEGEND

● FOUND SPIKE & WASHER L.S. 5749 UNLESS OTHERWISE NOTED

○ SET LEAD AND TACK IN TOP OF CURB UNLESS OTHERWISE NOTED



1"=30'

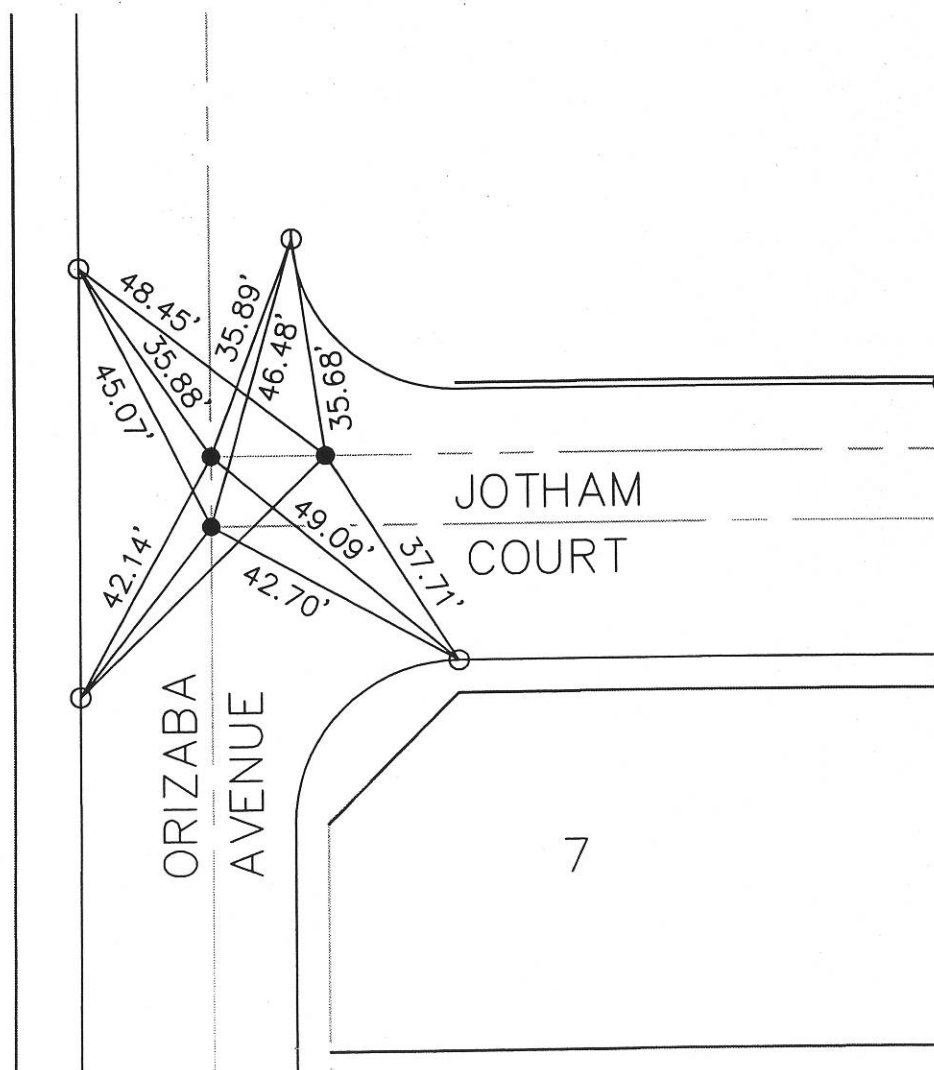
SURVEY OF: TRACT 51830 & 51830-1
 HALL & FOREMAN, INC. JOTHAM COURT
 JON E. SOLLIE, P.L.S. 5749

PUBLIC WORKS DEPARTMENT
 CITY OF SIGNAL HILL, CALIFORNIA

LEGEND

● FOUND SPIKE & WASHER L.S. 5749 UNLESS OTHERWISE NOTED

○ SET LEAD AND TACK IN TOP OF CURB UNLESS OTHERWISE NOTED



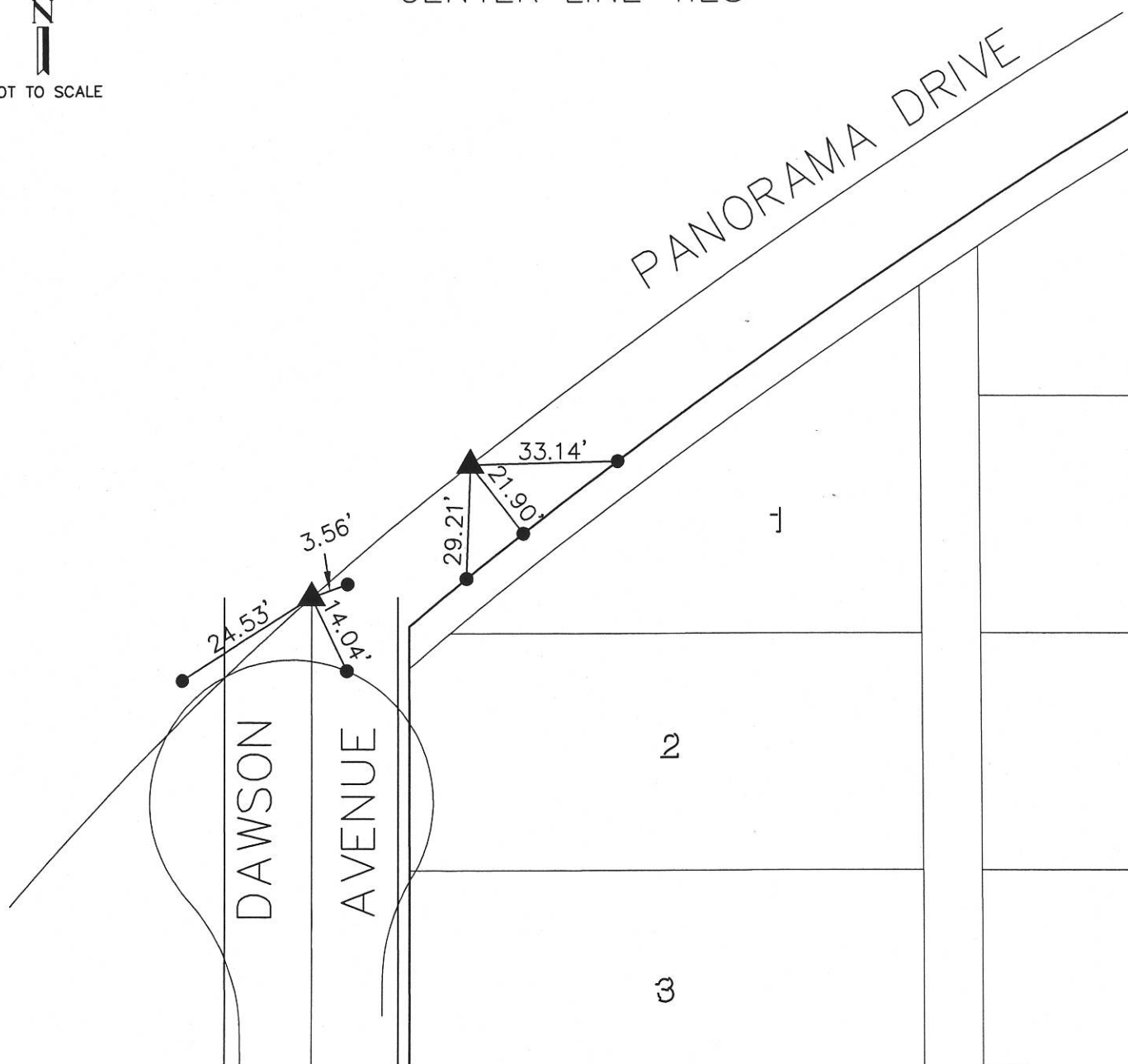
TRACT NO. 53228-1

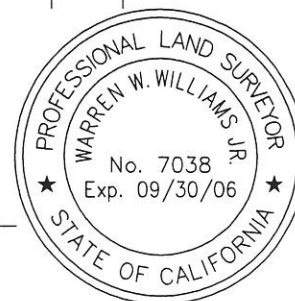
IN THE CITY OF SIGNAL HILL, COUNTY OF LOS ANGELES,
STATE OF CALIFORNIA

CENTER LINE TIES



NOT TO SCALE



WARREN W. WILLIAMS, JR.
PLS 7038 EXR. 09/30/06LEGEND

- ▲ SET 8" SPIKE & WASHER STAMPED "LS 7038" UNLESS OTHERWISE NOTED
- SET LEAD AND TAG STAMPED "LS7038" IN TOP OF CURB UNLESS OTHERWISE NOTED

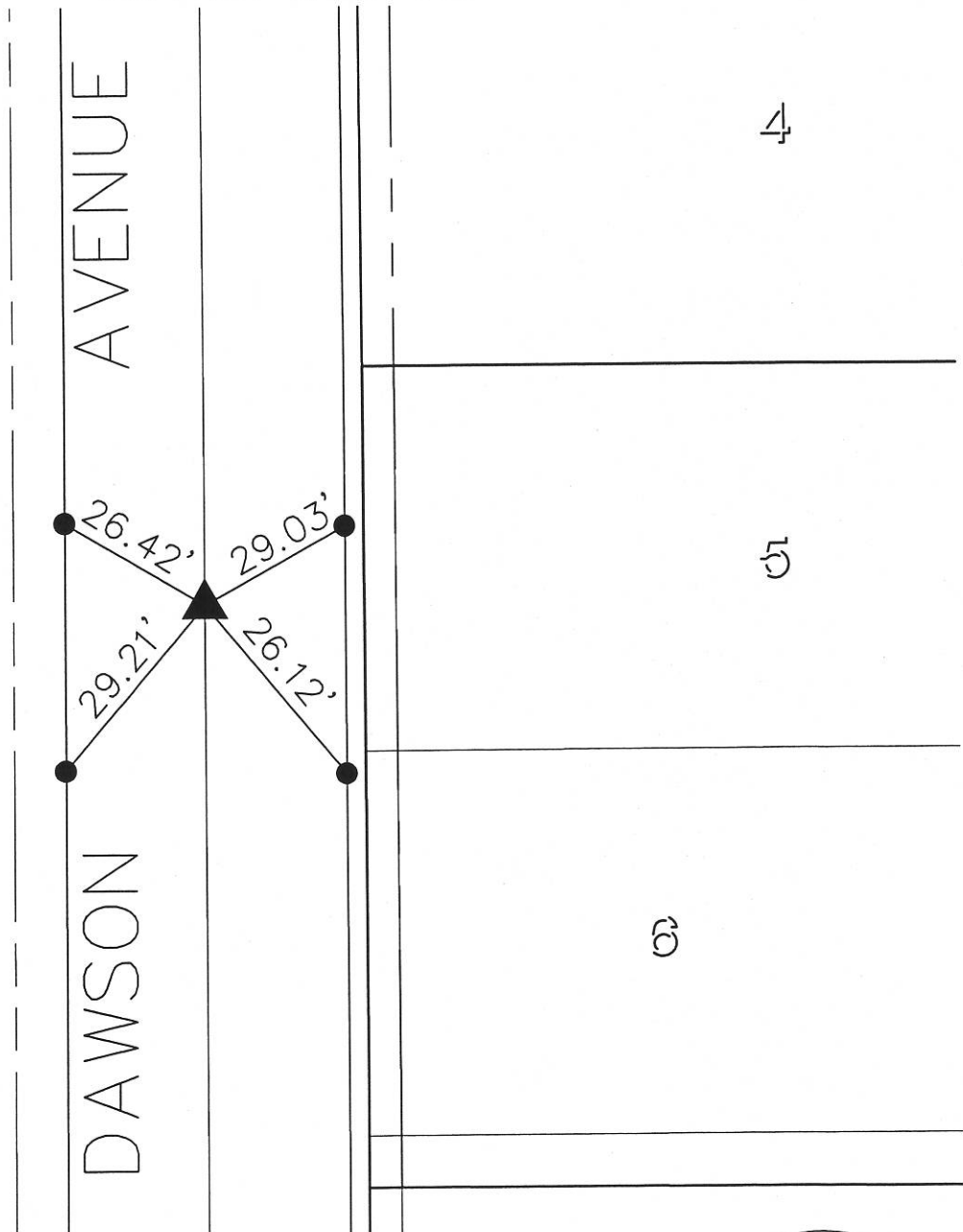
TRACT NO. 53228-1

IN THE CITY OF SIGNAL HILL, COUNTY OF LOS ANGELES,
STATE OF CALIFORNIA

CENTER LINE TIES



NOT TO SCALE



WARREN W. WILLIAMS, JR.
PLS 7038 EXR. 09/30/06LEGEND

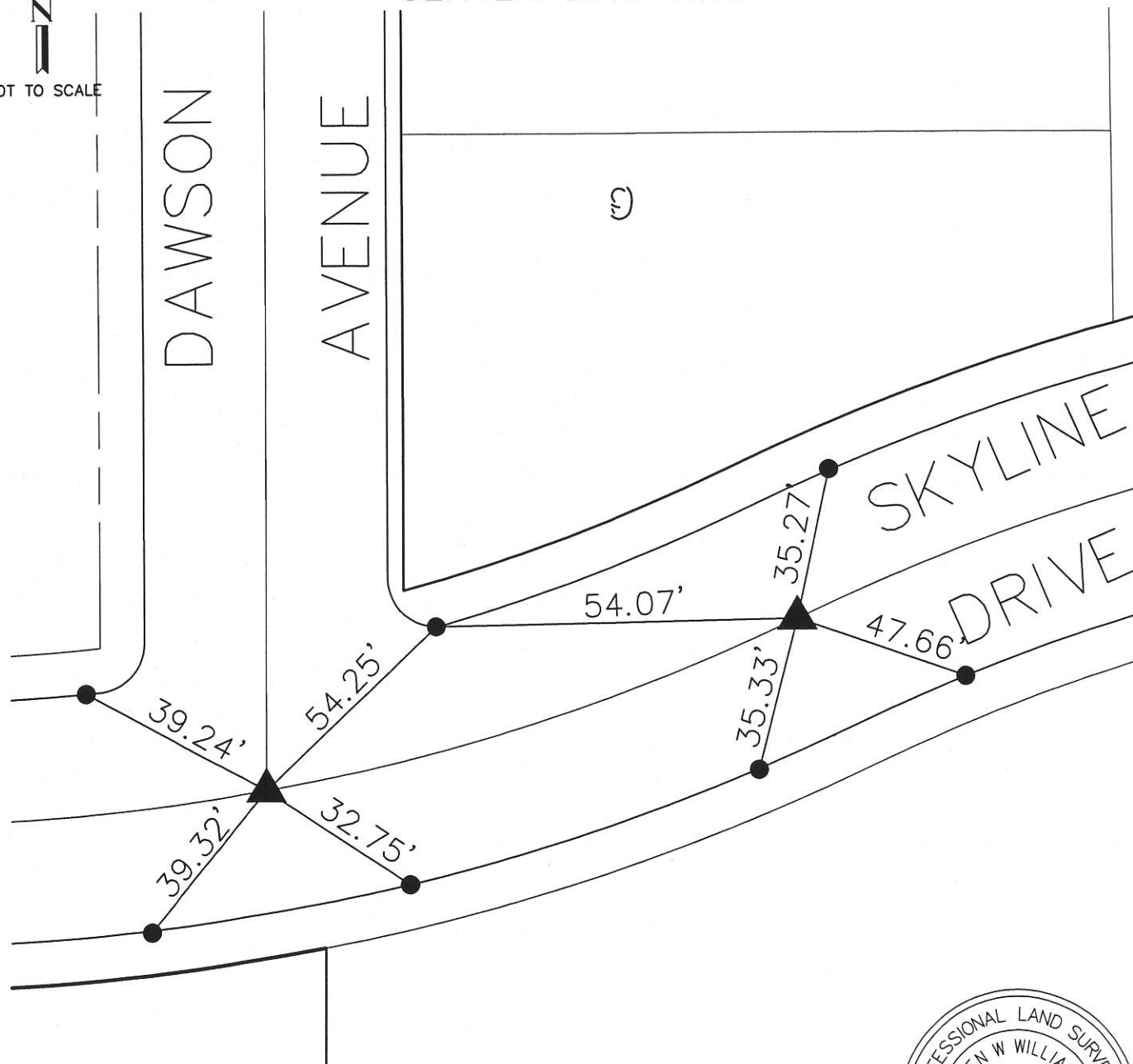
- ▲ SET 8" SPIKE & WASHER STAMPED "LS 7038" UNLESS OTHERWISE NOTED
- SET LEAD AND TAG STAMPED "LS7038" IN TOP OF CURB UNLESS OTHERWISE NOTED

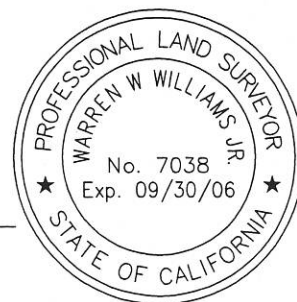
TRACT NO. 53228-1

IN THE CITY OF SIGNAL HILL, COUNTY OF LOS ANGELES,
STATE OF CALIFORNIA

CENTER LINE TIES

NOT TO SCALE



WARREN W. WILLIAMS, JR.
PLS 7038 EXR. 09/30/06LEGEND

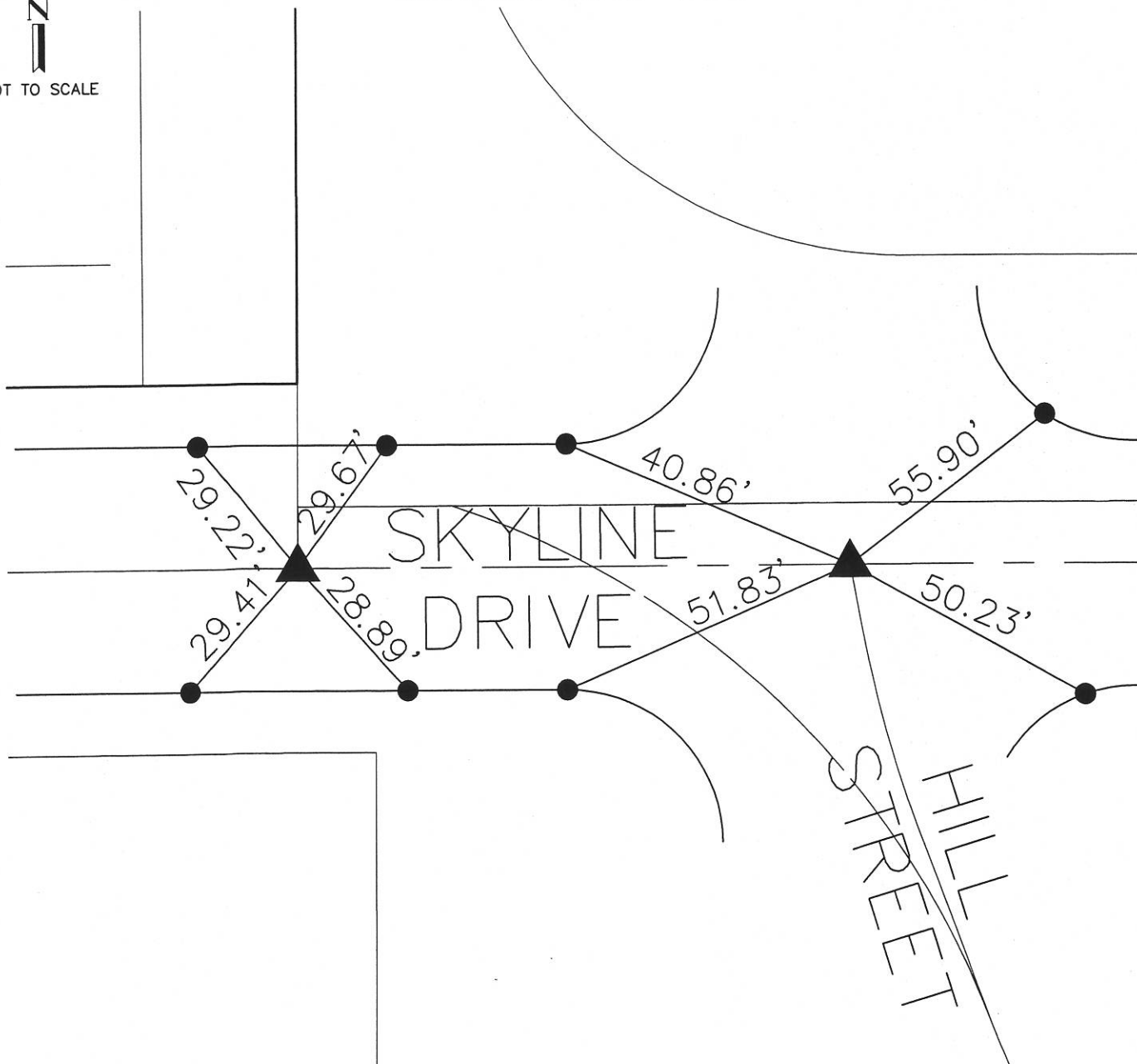
- ▲ SET 8" SPIKE & WASHER STAMPED "LS 7038" UNLESS OTHERWISE NOTED
- SET LEAD AND TAG STAMPED "LS7038" IN TOP OF CURB UNLESS OTHERWISE NOTED

TRACT NO. 53228-I

IN THE CITY OF SIGNAL HILL, COUNTY OF LOS ANGELES,
STATE OF CALIFORNIA

CENTER LINE TIES

NOT TO SCALE



WARREN W. WILLIAMS, JR.
PLS 7038 EXR. 09/30/06

LEGEND

- ▲ SET 8" SPIKE & WASHER STAMPED "LS 7038" UNLESS OTHERWISE NOTED
- SET LEAD AND TAG STAMPED "LS7038" IN TOP OF CURB UNLESS OTHERWISE NOTED

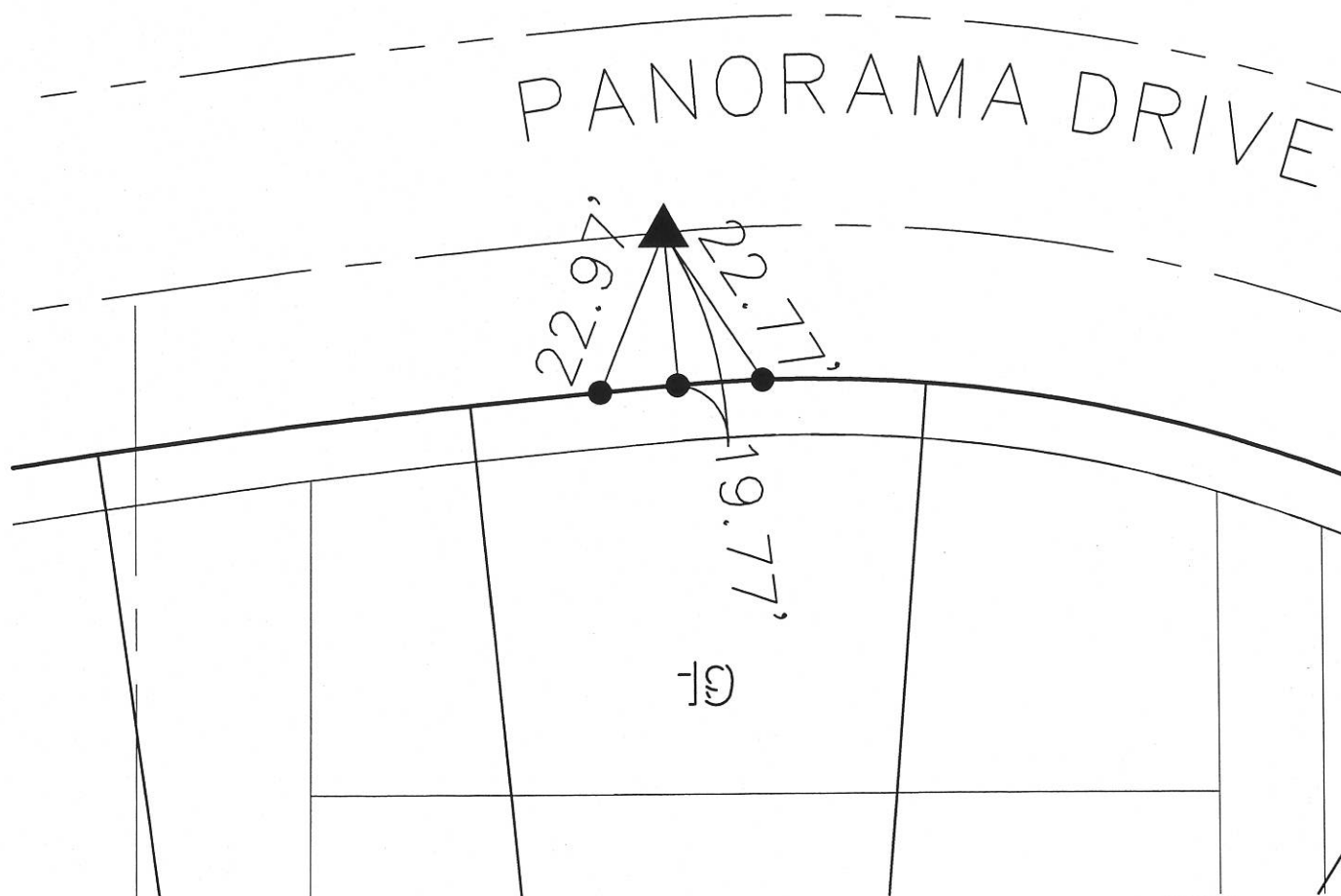
TRACT NO. 53228-1

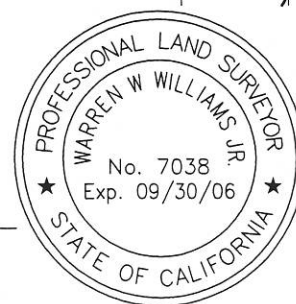
IN THE CITY OF SIGNAL HILL, COUNTY OF LOS ANGELES,
STATE OF CALIFORNIA

CENTER LINE TIES



NOT TO SCALE



WARREN W. WILLIAMS, JR.
PLS 7038 EXR. 09/30/06LEGEND

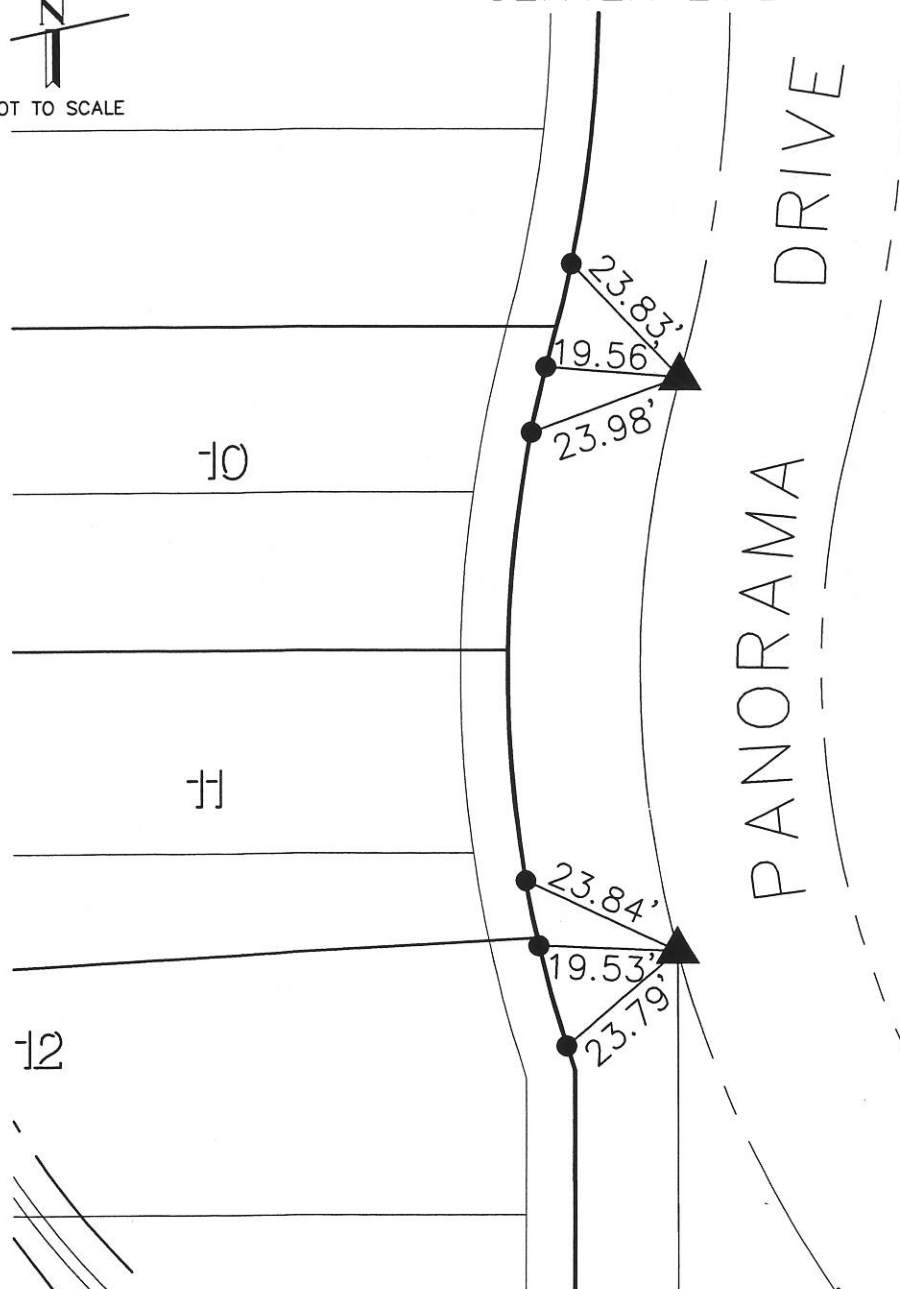
- ▲ SET 8" SPIKE & WASHER STAMPED "LS 7038" UNLESS OTHERWISE NOTED
- SET LEAD AND TAG STAMPED "LS7038" IN TOP OF CURB UNLESS OTHERWISE NOTED

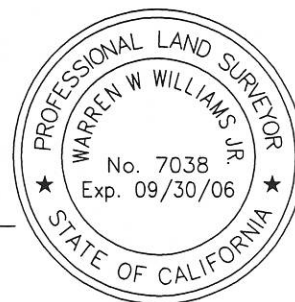
TRACT NO. 53228-1

IN THE CITY OF SIGNAL HILL, COUNTY OF LOS ANGELES,
STATE OF CALIFORNIA

CENTER LINE TIES

NOT TO SCALE



WARREN W. WILLIAMS, JR.
PLS 7038 EXR. 09/30/06LEGEND

- ▲ SET 8" SPIKE & WASHER STAMPED "LS 7038" UNLESS OTHERWISE NOTED
- SET LEAD AND TAG STAMPED "LS7038" IN TOP OF CURB
UNLESS OTHERWISE NOTED

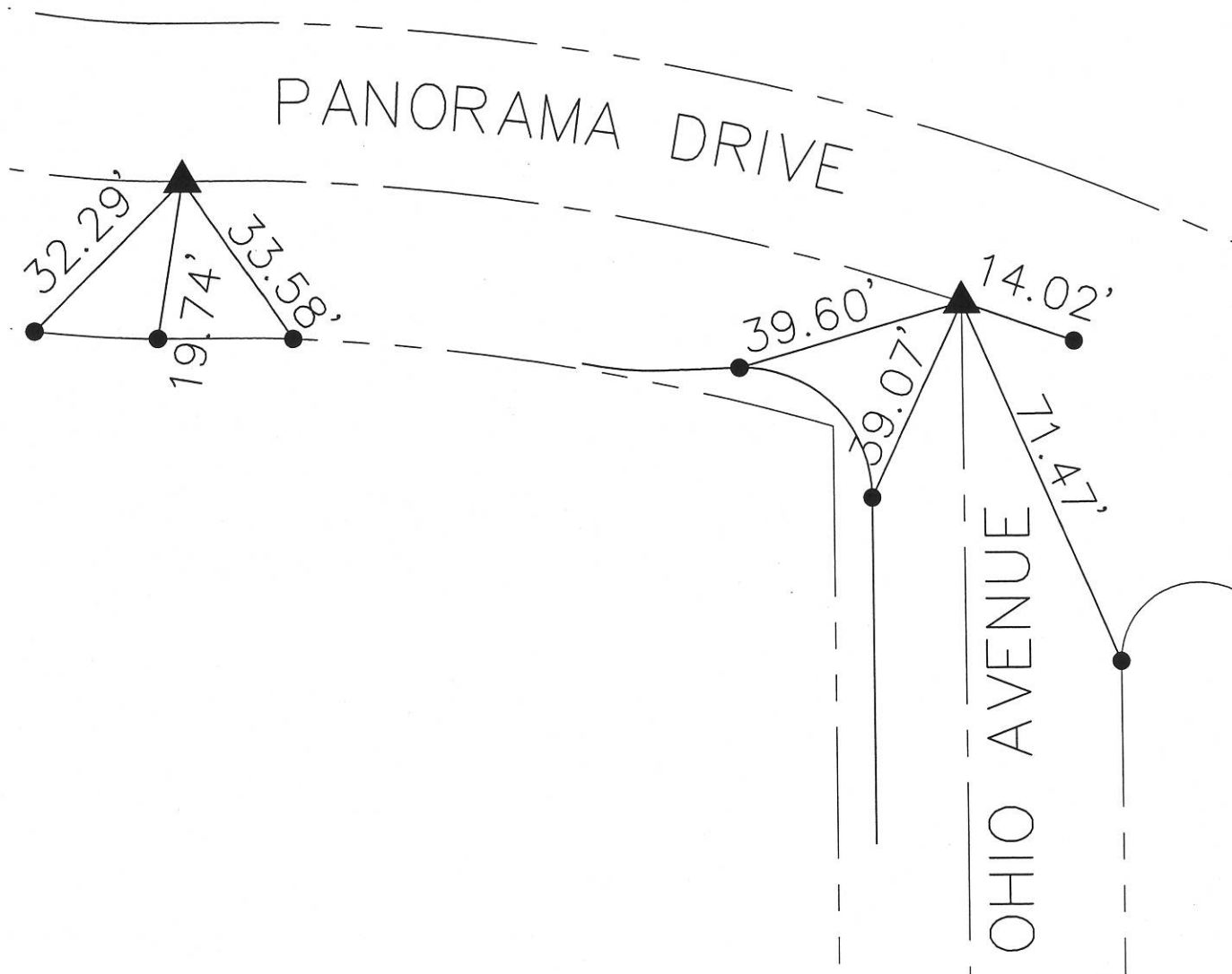
TRACT NO. 53228-1

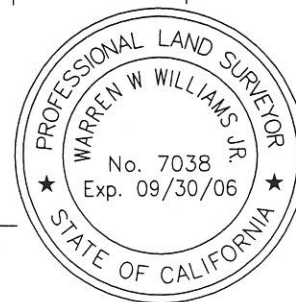
IN THE CITY OF SIGNAL HILL, COUNTY OF LOS ANGELES,
STATE OF CALIFORNIA

CENTER LINE TIES



NOT TO SCALE



WARREN W. WILLIAMS, JR.
PLS 7038 EXR. 09/30/06LEGEND

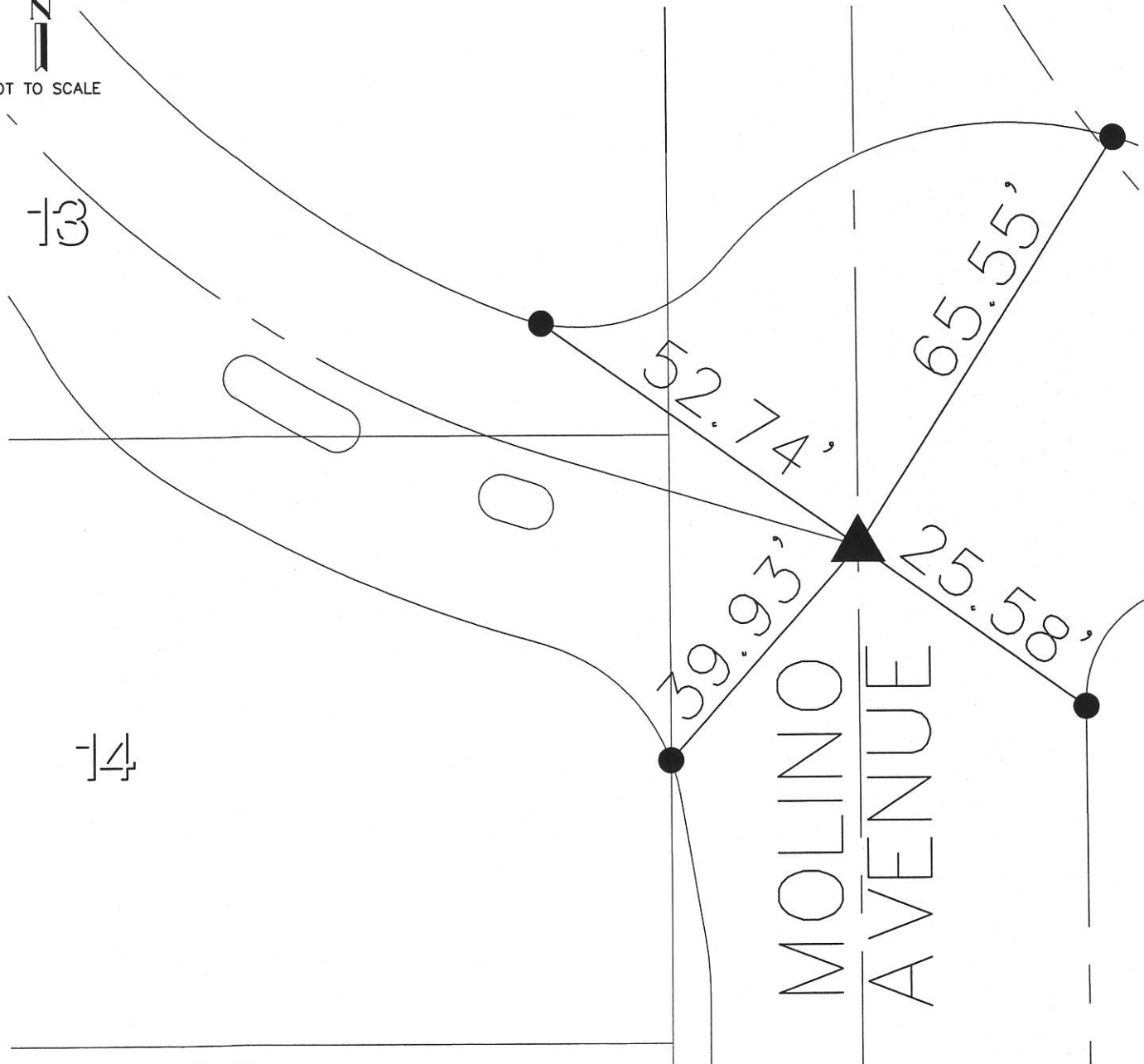
- ▲ SET 8" SPIKE & WASHER STAMPED "LS 7038" UNLESS OTHERWISE NOTED
- SET LEAD AND TAG STAMPED "LS7038" IN TOP OF CURB UNLESS OTHERWISE NOTED

TRACT NO. 53228-1

IN THE CITY OF SIGNAL HILL, COUNTY OF LOS ANGELES,
STATE OF CALIFORNIA

CENTER LINE TIES

NOT TO SCALE



WARREN W. WILLIAMS, JR.
PLS 7038 EXR. 09/30/06LEGEND

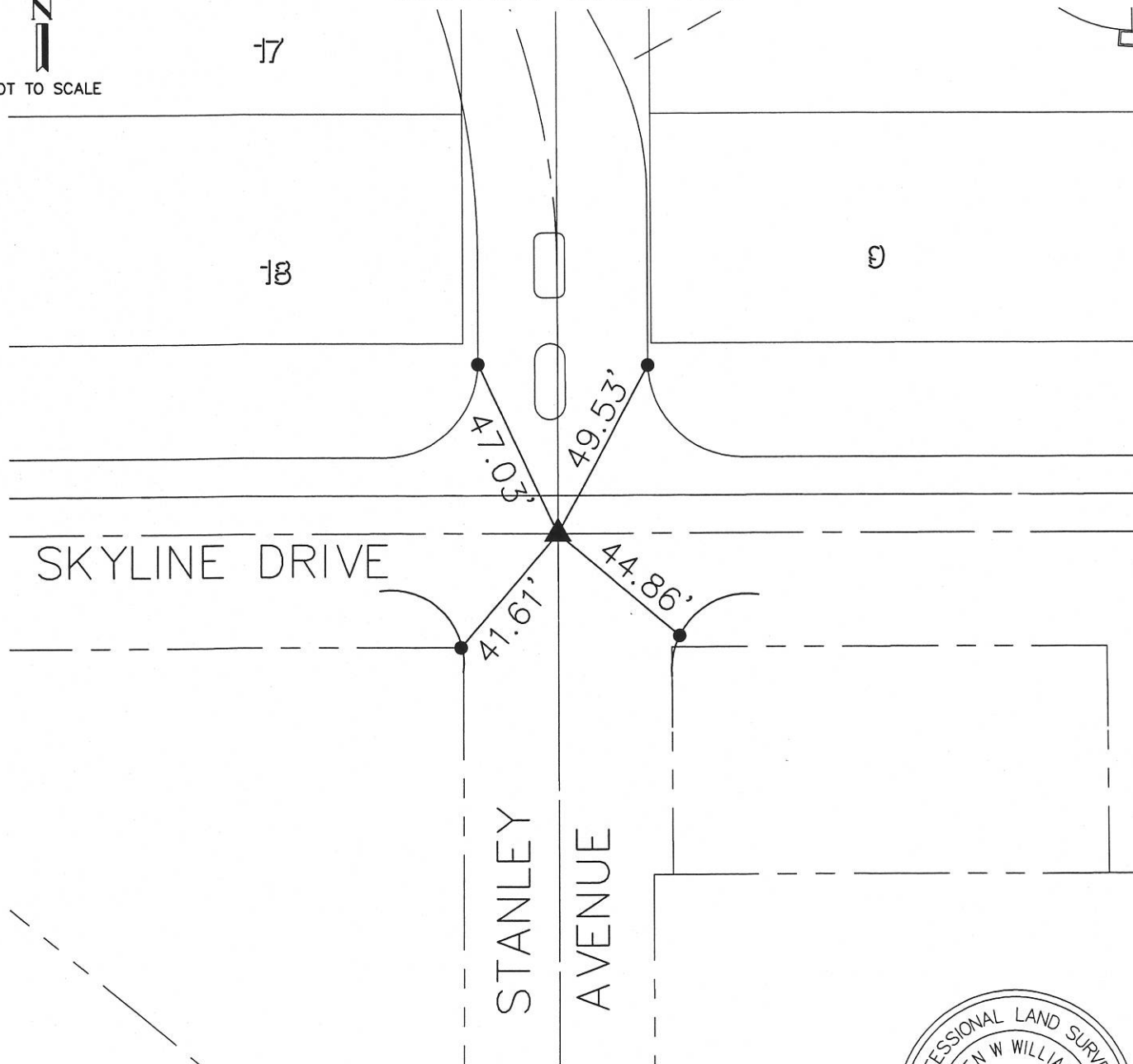
- ▲ SET 8" SPIKE & WASHER STAMPED "LS 7038" UNLESS OTHERWISE NOTED
- SET LEAD AND TAG STAMPED "LS7038" IN TOP OF CURB UNLESS OTHERWISE NOTED

TRACT NO. 53228-1

IN THE CITY OF SIGNAL HILL, COUNTY OF LOS ANGELES,
STATE OF CALIFORNIA

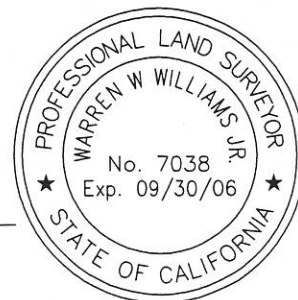
CENTER LINE TIES

NOT TO SCALE



W. Williams Jr.

WARREN W. WILLIAMS, JR.
PLS 7038 EXR. 09/30/06



LEGEND

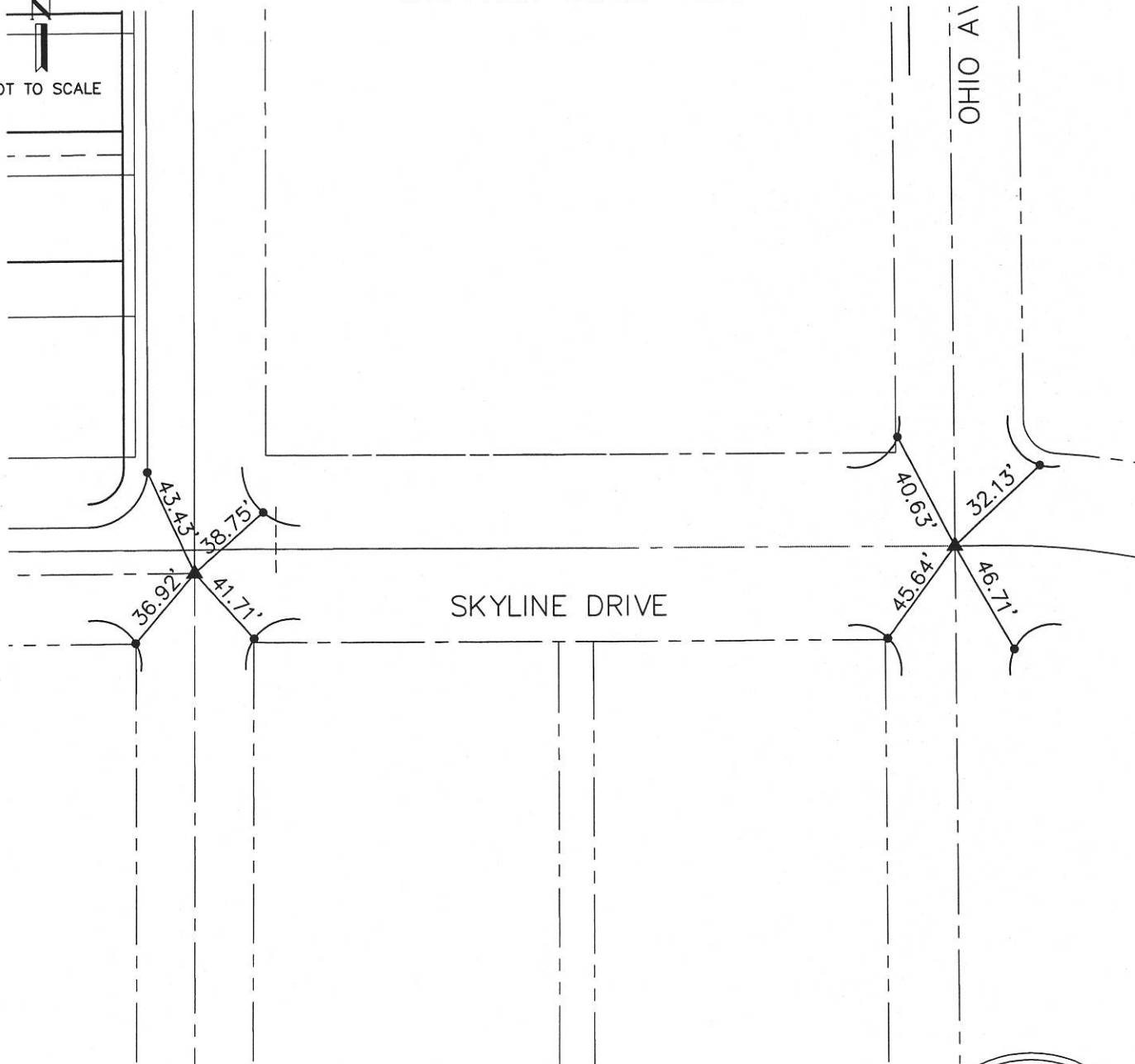
- ▲ SET 8" SPIKE & WASHER STAMPED "LS 7038" UNLESS OTHERWISE NOTED
- SET LEAD AND TAG STAMPED "LS7038" IN TOP OF CURB UNLESS OTHERWISE NOTED

TRACT NO. 53228-1

IN THE CITY OF SIGNAL HILL, COUNTY OF LOS ANGELES,
STATE OF CALIFORNIA

CENTER LINE TIES

NOT TO SCALE



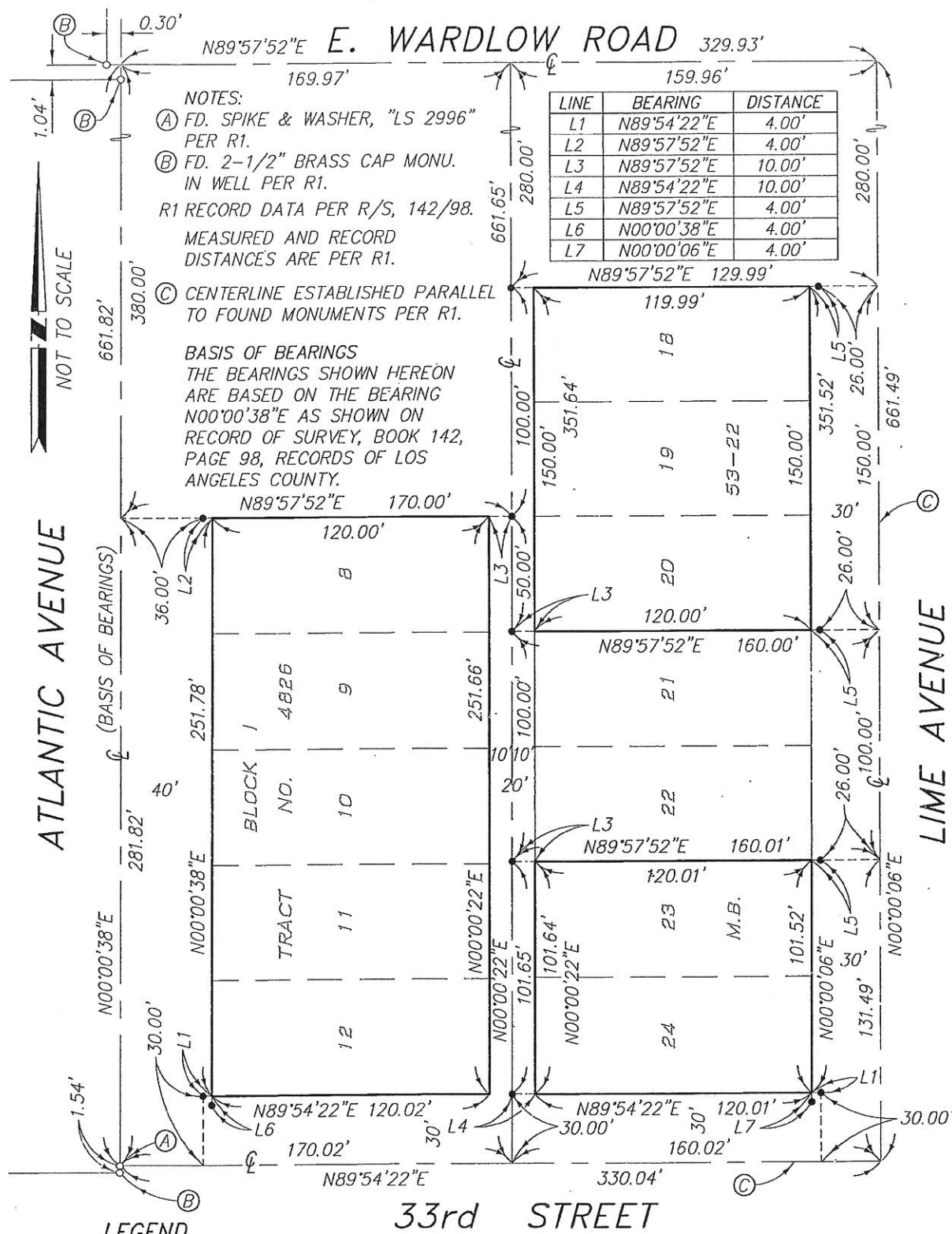
W. Williams Jr.

WARREN W. WILLIAMS, JR.
PLS 7038 EXR. 09/30/06



LEGEND

- ▲ SET 8" SPIKE & WASHER STAMPED "LS 7038" UNLESS OTHERWISE NOTED
- SET LEAD AND TAG STAMPED "LS7038" IN TOP OF CURB UNLESS OTHERWISE NOTED

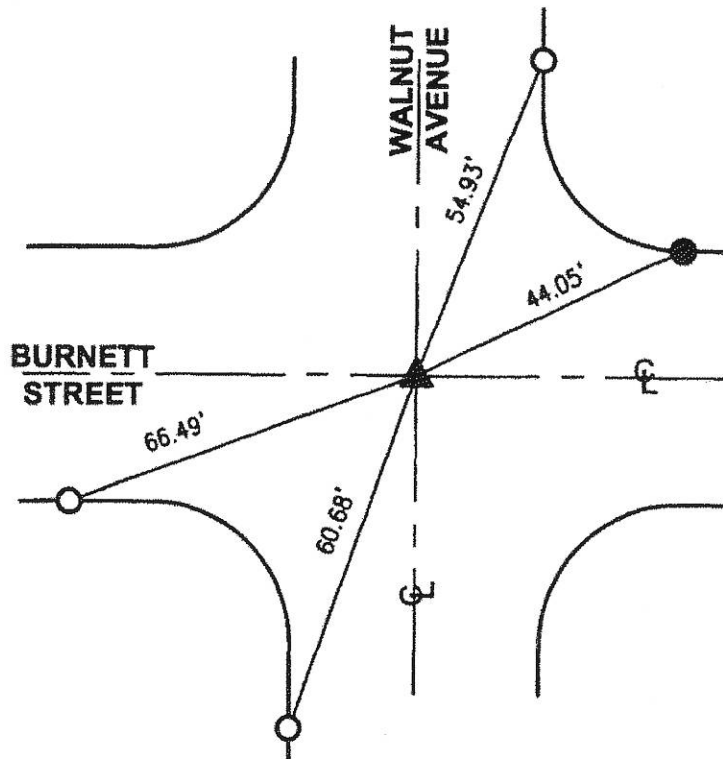


G:\P\SMC10079\10079 corner record.dwg 9/20/2011 8:28:53 AM PDT

R-1 = COUNTY OF LOS ANGELES FLOOD CONTROL FIELD BOOK F.C.S.D. 7601-51



N.T.S.



▲ FD 3 1/2" BRASS DISK STAMPED "LA CO FLOOD CONTROL" IN SURVEY WELL MON. PER R-1, DOWN 0.6', BEFORE AND AFTER CONSTRUCTION.

● FD L & T IN T.C. NO REF.

○ SET L, T & T "LS 5411" IN T.C.

THE PURPOSE OF THIS RECORD IS TO DOCUMENT THE PERPETUATION OF FOUND MONUMENT(S) PURSUANT TO THE PLS ACT SECTION 8771. NO CLAIM IS MADE REGARDING THE CORRECTNESS OF THE POSITION(S) OF SAID MONUMENT(S), NOR THE DIMENSIONAL RELATIONSHIP TO STREET CENTERLINES OR PROPERTY BOUNDARIES.

14-ALL-633

CORNER RECORD

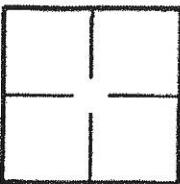
PWFB 0323

976

Document Number

City of SIGNAL HILL County of LOS ANGELES, California
 Brief Legal Description BURNETT STREET & WALNUT AVENUE

15909

**CORNER TYPE**

Government Corner ☐ Control ☒
 Meander ☐ Property ☐
 Rancho ☐ Other ☐

Date of Survey 10/3/2014 & 1/14/2015**COORDINATES (Optional)**

N. _____
 E. _____
 Zone _____ NAD27 ☐ NAD83 ☐
 NAD83 Epoch _____
 Elevation _____
 Vertical Datum: NGVD29 ☐ NAVD88 ☐
 Units: Metric ☐ Imperial ☐ U.S. Survey ☒

Corner — Left as found ☒ Found and tagged ☐ Established ☐ Reestablished ☐ Rebuilt ☐

Identification and type of corner found; Evidence used to identify or procedure used to establish or reestablish corner:
Found as described on the reverse of this sheet.

A description of the physical condition of the monument as found and as set or reset: _____

See Page 2

SURVEYOR'S STATEMENT

This Corner Record was prepared by me or under my direction in conformance with
 the Professional Land Surveyors' Act on 1/28/2015

Signed [Signature] P.L.S. or R.C.E. No. L.S. 5411

**COUNTY SURVEYOR'S STATEMENT**

This Corner Record was received FEB 09 2015

examined and filed FEB 18 2015

Signed [Signature] P.L.S. or R.C.E. No. 6388

Title DEPUTY COUNTY SURVEYOR



County Surveyor's Comment _____

PWFB 0324

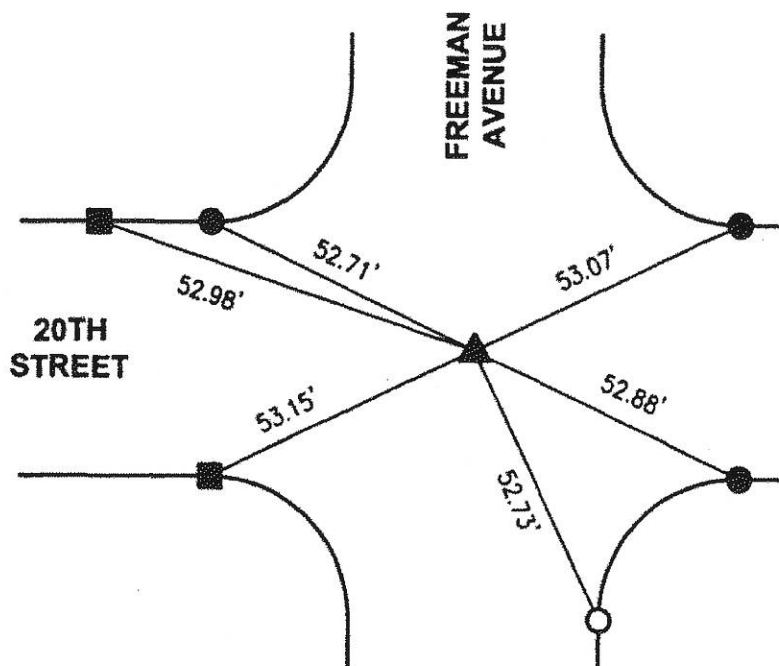
Document Number

1111

R-1 = COUNTY OF LOS ANGELES PWFB 0324/236-237

UNABLE TO VERIFY
CENTERLINE POSITION

N.T.S.



▲ FD SQ. HEAD SPK, POSSIBLY POSITION OF SPK PER R-1, DOWN 0.2', UNABLE TO VERIFY CENTERLINE POSITION BEFORE AND AFTER CONSTRUCTION.

● FD L & T IN T.C. NO REF.

■ FD LEAD IN T.C. NO REF.

○ SET L, T & T "LS 5411" IN T.C.

THE PURPOSE OF THIS RECORD IS TO DOCUMENT THE PERPETUATION OF FOUND MONUMENT(S) PURSUANT TO THE PLS ACT SECTION 8771. NO CLAIM IS MADE REGARDING THE CORRECTNESS OF THE POSITION(S) OF SAID MONUMENT(S), NOR THE DIMENSIONAL RELATIONSHIP TO STREET CENTERLINES OR PROPERTY BOUNDARIES.

14-ALL-633

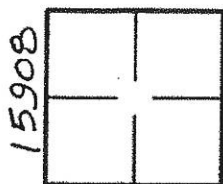
CORNER RECORD

PWFB 0324

1110

Document Number _____

City of SIGNAL HILL County of LOS ANGELES, California
 Brief Legal Description 20TH STREET & FREEMAN AVENUE

**CORNER TYPE**

Government Corner ☐ Control ☐
 Meander ☐ Property ☐
 Rancho ☐ Other ☒

Date of Survey 10/3/2014 & 1/14/2015**COORDINATES (Optional)**

N. _____
 E. _____
 Zone _____ NAD27 ☐ NAD83 ☐
 NAD83 Epoch _____
 Elevation _____
 Vertical Datum: NGVD29 ☐ NAVD88 ☐
 Units: Metric ☐ Imperial ☐ U.S. Survey ☒

Corner — Left as found ☒ Found and tagged ☐ Established ☐ Reestablished ☐ Rebuilt ☐

Identification and type of corner found; Evidence used to identify or procedure used to establish or reestablish corner:
Found as described on the reverse of this sheet.

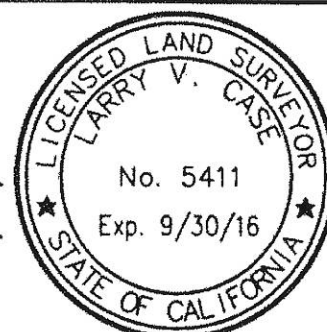
A description of the physical condition of the monument as found and as set or reset: _____

See Page 2

SURVEYOR'S STATEMENT

This Corner Record was prepared by me or under my direction in conformance with
 the Professional Land Surveyors' Act on 1/28/2015

Signed [Signature] P.L.S. or R.C.E. No. L.S. 5411

**COUNTY SURVEYOR'S STATEMENT**

This Corner Record was received FEB 09 2015

examined and filed FEB 18 2015

Signed Curt M. O'Bryan P.L.S. or R.C.E. No. 6388

Title DEPUTY COUNTY SURVEYOR



County Surveyor's Comment _____