

SIGNAL HILL POLICE DEPARTMENT

QUARTERLY REPORT

OCTOBER- DECEMBER 2022

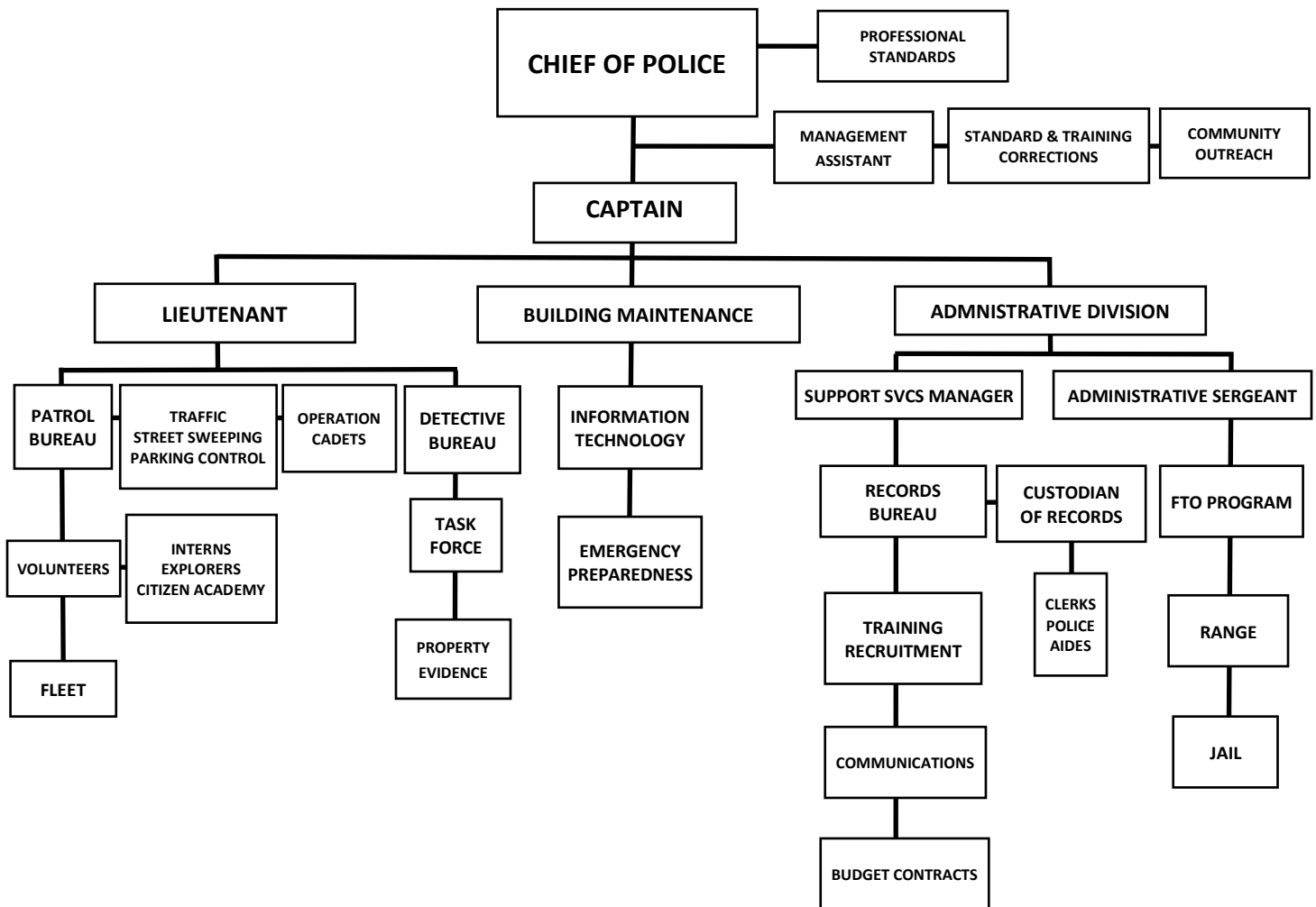


TABLE OF CONTENTS

ADMINISTRATION BUREAU	3
Organizational Chart	3
Personnel	4
Use of Force	5
Complaints and Findings	5
 OPERATIONS BUREAU	 6
Response Time (in progress)	6
Calls for Service	6
Police Reports	7
Mental Health Related Contacts	7
Parking Citations	8
Traffic Citations	8
Traffic Division	8
Racial Identification and Profiling Act (RIPA)	9
Traffic Stop Detentions and Results (by Race)	9
RIPAs (with Detainees)	10
Search and Yield Results	10
 INVESTIGATIONS BUREAU	 11
Group A Crimes	11
Group B Crimes (Arrests Only)	11
 Reported Arrests	
Arrests (by Race)	12
Juvenile Arrests (by Race)	12

ADMINISTRATION BUREAU

ORGANIZATIONAL CHART



PERSONNEL

Non-Sworn Staff Openings:

2

- (1) Dispatcher/Jailer
- (1) EOC Coordinator- Part-time

Sworn Staff Openings:

7

- (7) Police Officer

Total Non-Sworn Staff: 20

Total Sworn Staff: 28

Total Police Department Staff: 48

Injured on Duty/Long Term Leave: 1

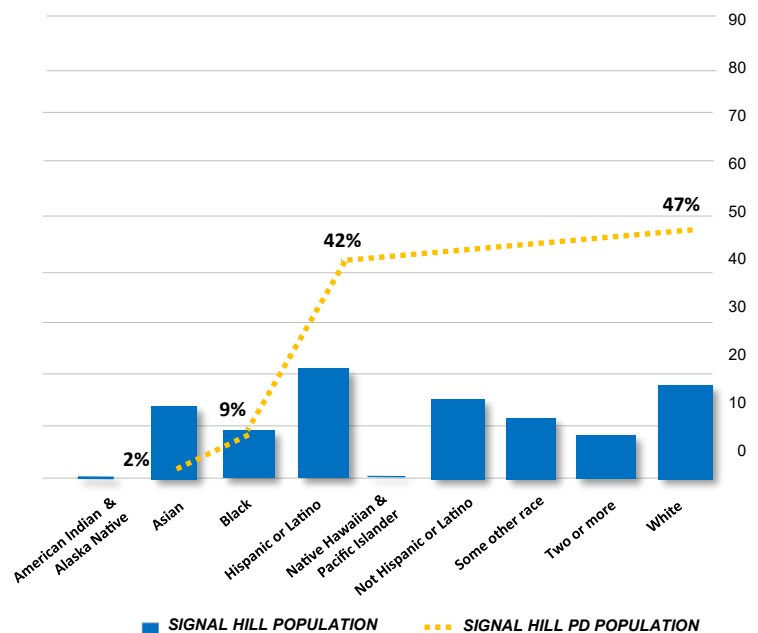
GENDER	DEPT PERSONNEL	%	SWORN PERSONNEL	%	NON-SWORN PERSONNEL	%	DEPT SUPERVISION	%
Male	25	52%	24	86%	1	0%	8	73%
Female	23	48%	4	14%	19	100%	3	27%
TOTAL	48	100%	28	100%	20	100%	11	100%

RACE	DEPT PERSONNEL	%	SWORN PERSONNEL	%	NON-SWORN PERSONNEL	%	DEPT SUPERVISION	%
White/Non-Hispanic	20	42%	17	61%	4	20%	6	55%
White/Hispanic	24	50%	9	32%	14	70%	4	36%
Black	3	6%	2	7%	1	5%	1	9%
Asian	1	2%	0	0%	1	5%	0	0%
TOTAL	48	100%	28	100%	20	100%	11	100%

SIGNAL HILL POPULATION = 11,848*

RACE	TOTAL	%
American Indian & Alaska Native	194	1%
Asian	2638	14%
Black	1626	9%
Hispanic or Latino	4208	22%
Native Hawaiian & Pacific Islander	93	.5%
Not Hispanic or Latino	2831	15%
Some other Race	2364	12.5%
Two or More	1485	8%
White	3448	18%
TOTAL	18887±	100%

*Based on the 2020 U.S Census Bureau
± Residents may have reported in multiple categories



Oct – Dec 2022

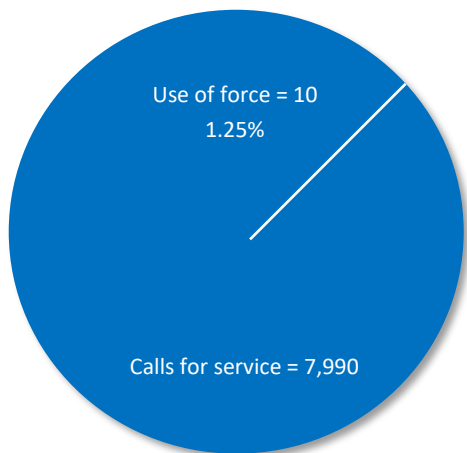
USE OF FORCE

Oct – Dec 2022 Totals*

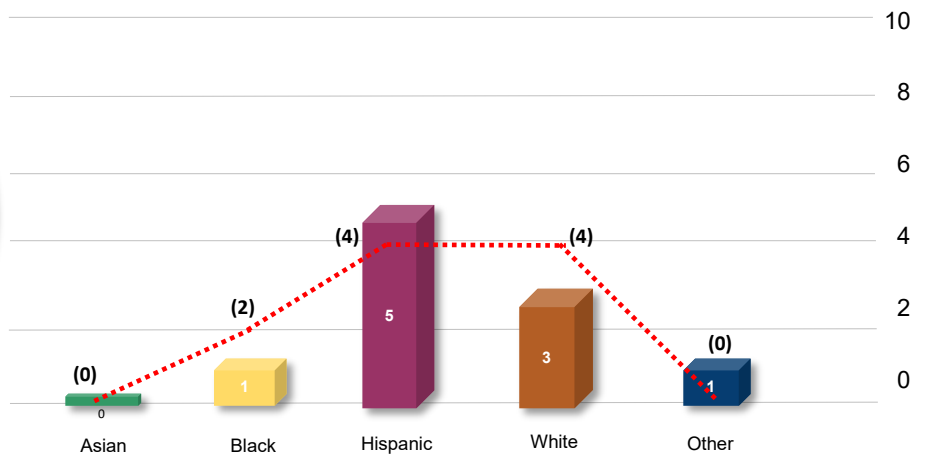
	CALLS FOR SERVICE	USE OF FORCE	USE OF FORCE%
OCTOBER	782	1	.13%
NOVEMBER	642	0	0
DECEMBER	589	0	0

*Totals reflect concluded investigations

2021 Use of Force per Calls for Service



2021 Use of Force by Race

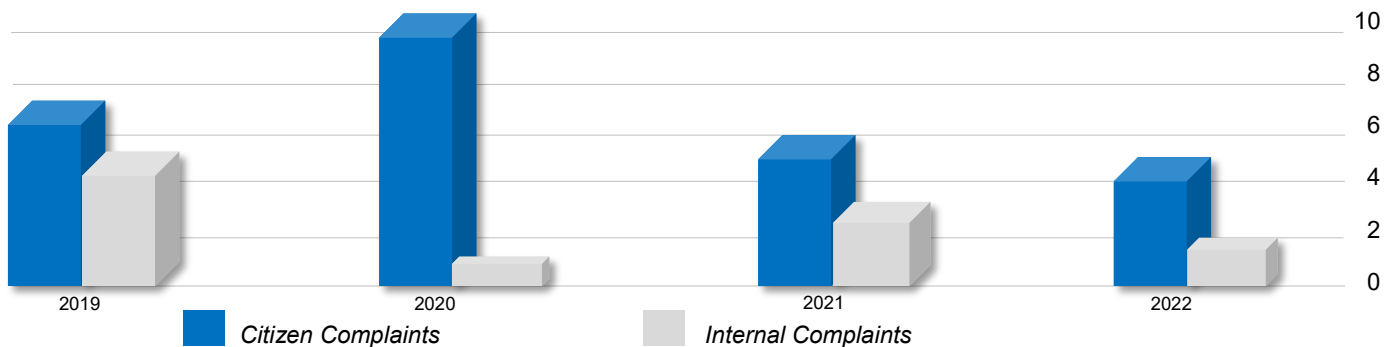


2022 Use of Force

COMPLAINTS

Annual Complaints and Findings

YEAR	CITIZEN COMPLAINTS	PENDING	SUSTAINED	INTERNAL COMPLAINTS	PENDING	SUSTAINED
2019	7	0	0	5	0	5
2020	11	0	1	1	0	1
2021	6	0	1	3	0	1
2022	5	0	0	2	0	2



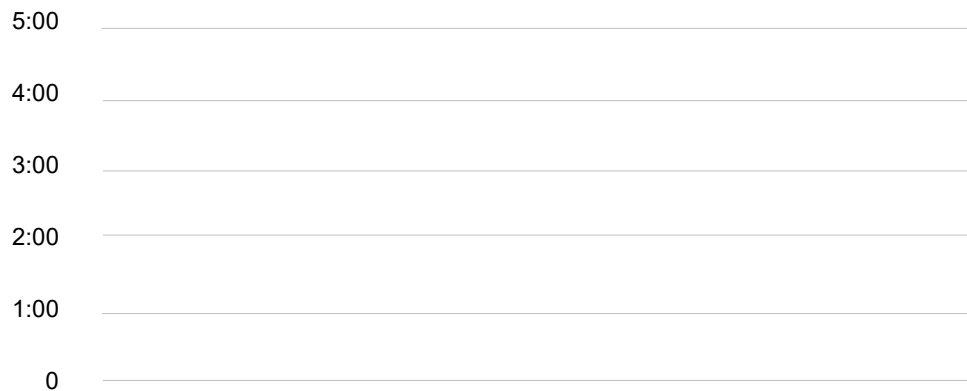
Oct – Dec 2022

OPERATIONS BUREAU

RESPONSE TIME (*in progress*)

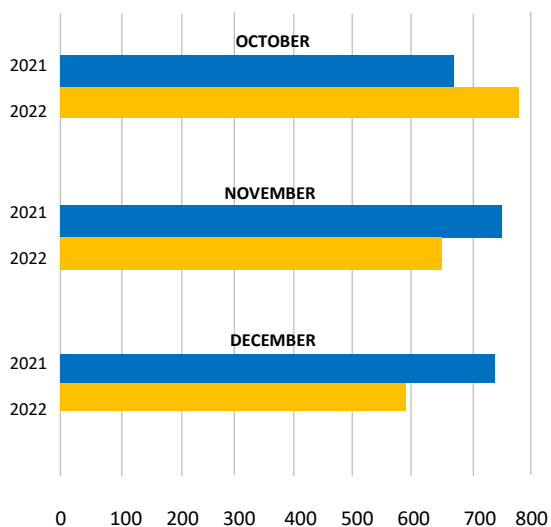
	OCTOBER 2022	NOVEMBER 2022	DECEMBER 2022
EMERGENCY	-	-	-
NON-EMERGENCY	-	-	-

Average Response Time

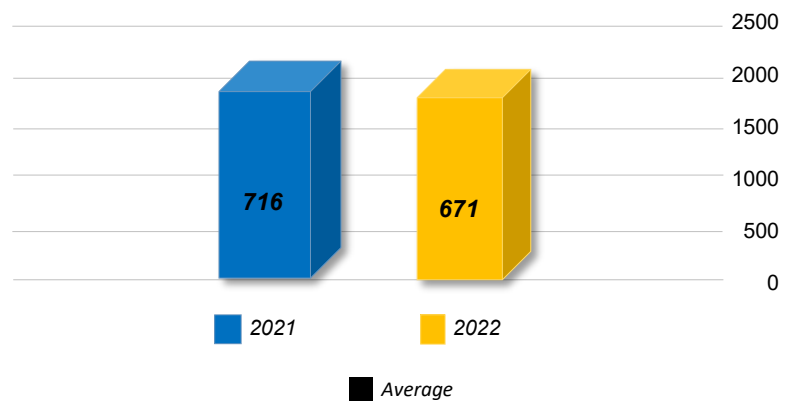


CALLS FOR SERVICE

	OCTOBER 2022	NOVEMBER 2022	DECEMBER 2022
Total Calls for Service	782	642	589

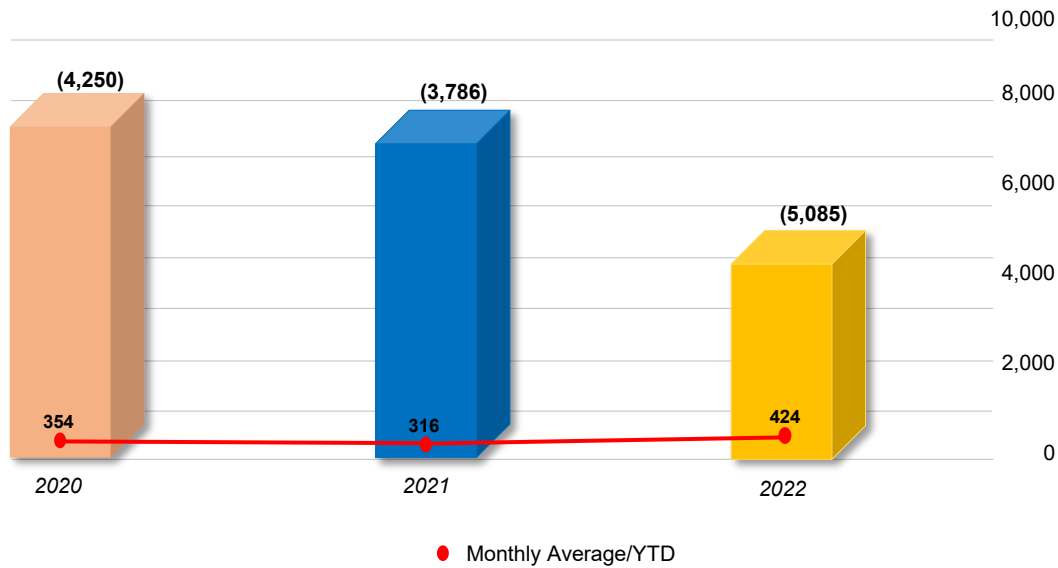


2021-2022 3rd Quarter Average Comparison

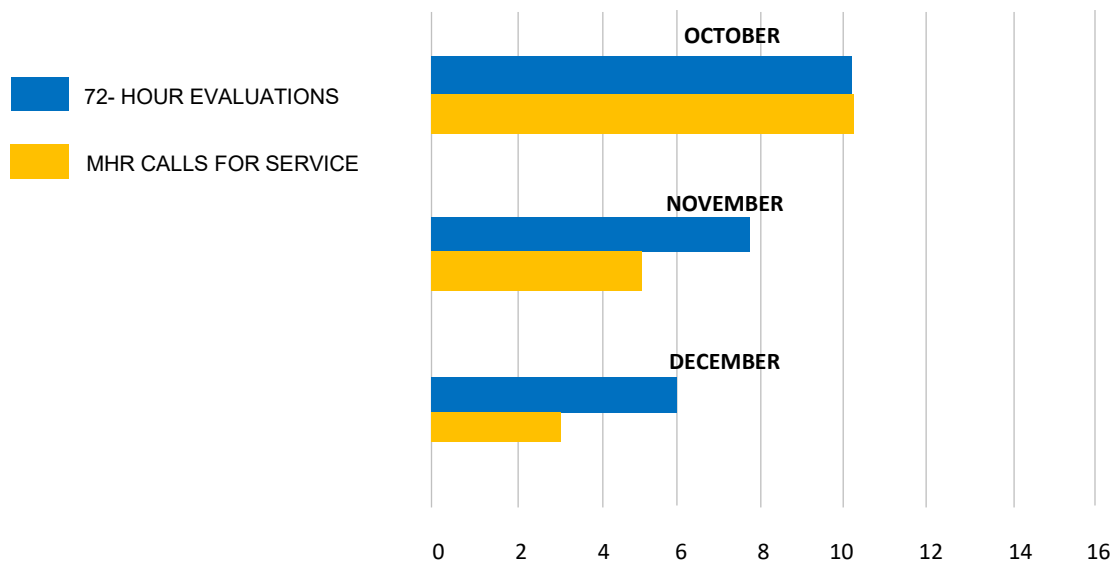


POLICE REPORTS

	OCTOBER 2022	NOVEMBER 2022	DECEMBER 2022
Police Reports	462	295	348

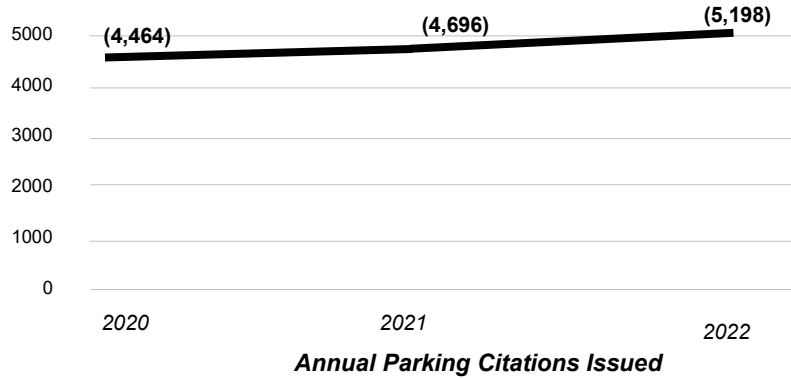
**MENTAL HEALTH RELATED (MHR) Contacts**

	OCTOBER 2022	NOVEMBER 2022	DECEMBER 2022
72-Hour Evaluations	11	7	6
MHR Calls for Service	11	5	3

**Oct – Dec 2022**

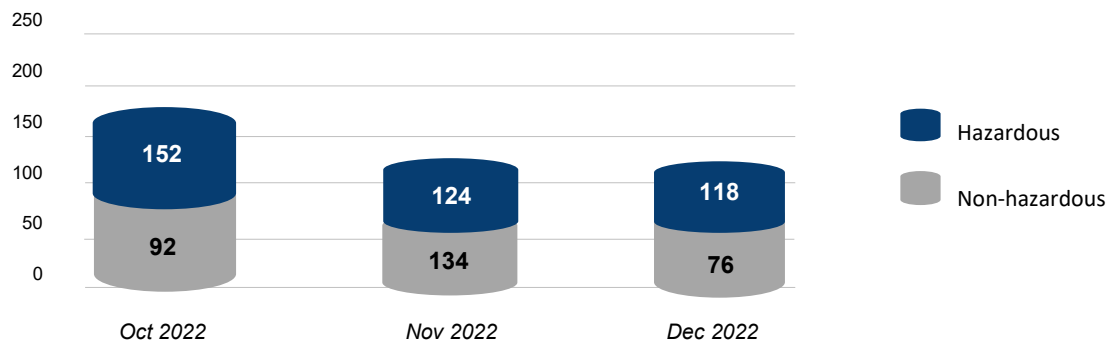
PARKING CITATIONS

	OCTOBER 2022	NOVEMBER 2022	DECEMBER 2022
Parking	446	426	446



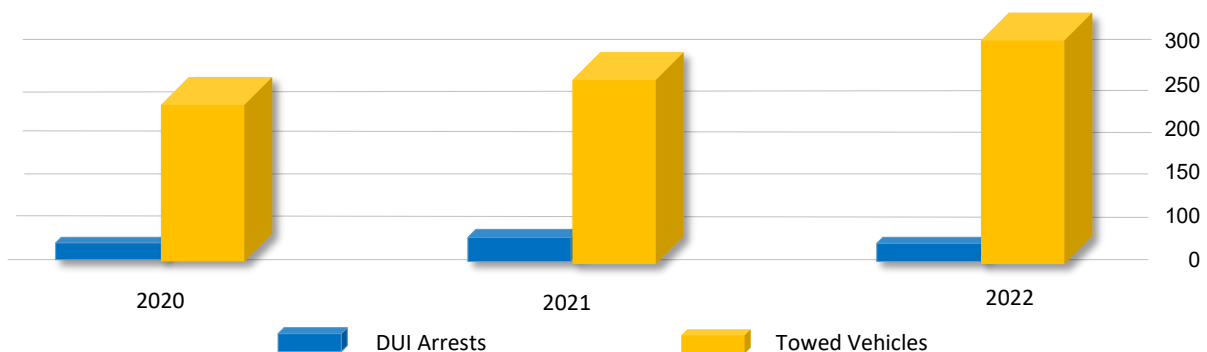
TRAFFIC CITATIONS

	OCTOBER 2022	NOVEMBER 2022	DECEMBER 2022	2021	2022
Hazardous	152	124	118	2266	2165
Non-Hazardous	92	54	76	1042	944



TRAFFIC DIVISION

	OCT 2022	NOV 2022	DEC 2022	2020	2021	2022
DUI Arrests	6	10	4	57	65	66
Towed Vehicles	28	24	24	259	296	381



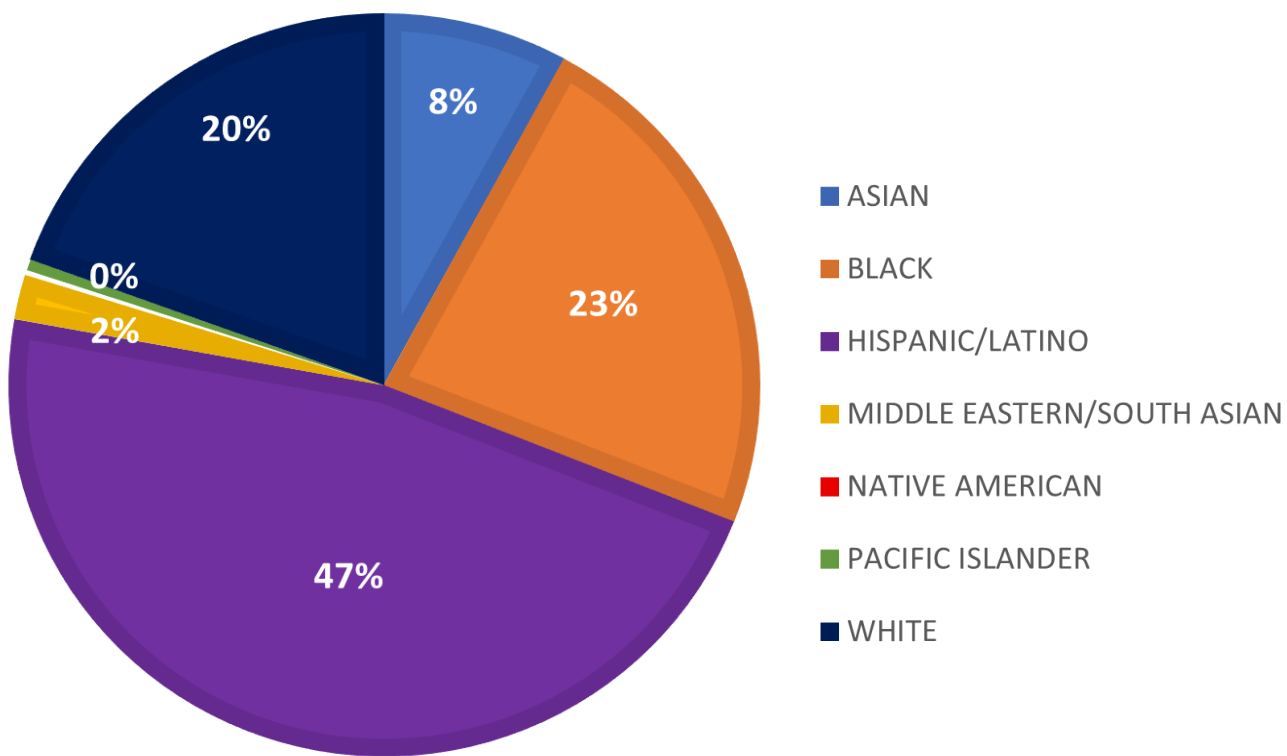
Oct – Dec 2022

RACIAL IDENTIFICATION and PROFILING ACT (RIPA)

In accordance with California Assembly Bill 953, the Signal Hill Police Department began collecting data regarding subject detentions. The Department of Justice (DOJ) required agencies to collect data as of January 2022. Among other things, data collected includes the perceived race or ethnicity, gender and approximate age of person detained, reason (s) for detention, whether or not a search was conducted and the result (s) of the detention.

Total Detentions & Results (by Race)

4th Quarter – October through December 2022

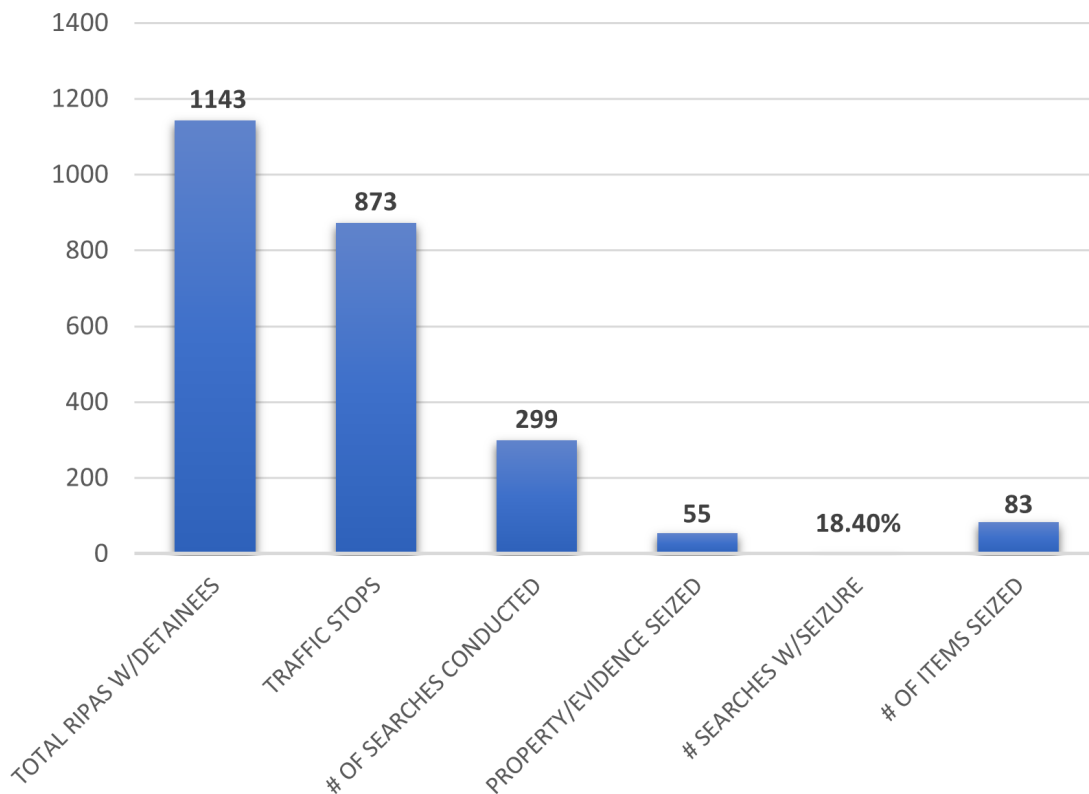
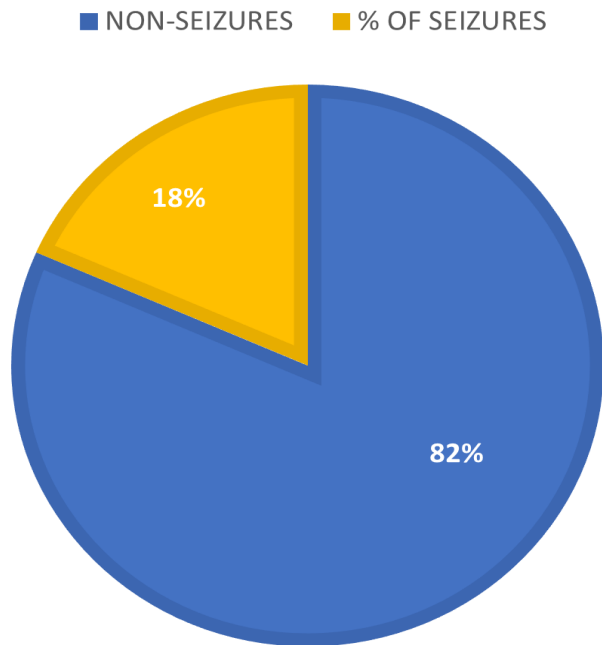


RACE	TOTAL	%
ASIAN	99	8%
BLACK	287	23%
HISPANIC/LATINO	584	46.8%
MIDDLE EASTERN/SOUTH ASIAN	24	1.9%
NATIVE AMERICAN	3	.2%
PACIFIC ISLANDER	6	.5%
WHITE	243	19.3%
TOTAL	1247	100%

Oct – Dec 2022

TOTAL RIPAs (with Detainees)**4th Quarter – October through December 2022**

TOTAL RIPAS W/DETAINEES	1143
TRAFFIC STOPS	873
# OF SEARCHES CONDUCTED	299
PROPERTY/EVIDENCE SEIZED	55
% SEARCHES W/SEIZURE	18.4%
# OF ITEMS SEIZED	83

***Oct – Dec 2022***

INVESTIGATION BUREAU

GROUP A CRIMES

	OCT 2022	NOV 2022	DEC 2022	2021	2022	2021-2022 % CHANGE
Homicide	0	0	0	0	0	0.00%
Sexual Assault	0	0	0	3	1	▼-66.67%
Robbery	3	5	0	29	32	▲10.34%
Aggravated Assault	10	3	3	36	57	▲58.33%
TOTAL VIOLENT CRIME	13	8	3	68	90	▲32.35%
Residential Burglary	2	6	4	50	42	▼-16.00%
Non-Residential Burglary	5	8	3	48	53	▲10.42%
Larceny*	41	39	15	448	402	▼-10.27%
Arson	0	1	1	2	8	▲300.00%
TOTAL PROPERTY CRIME	48	54	23	548	505	▼-7.85%

* this category includes shoplifting, petty theft and auto burglary

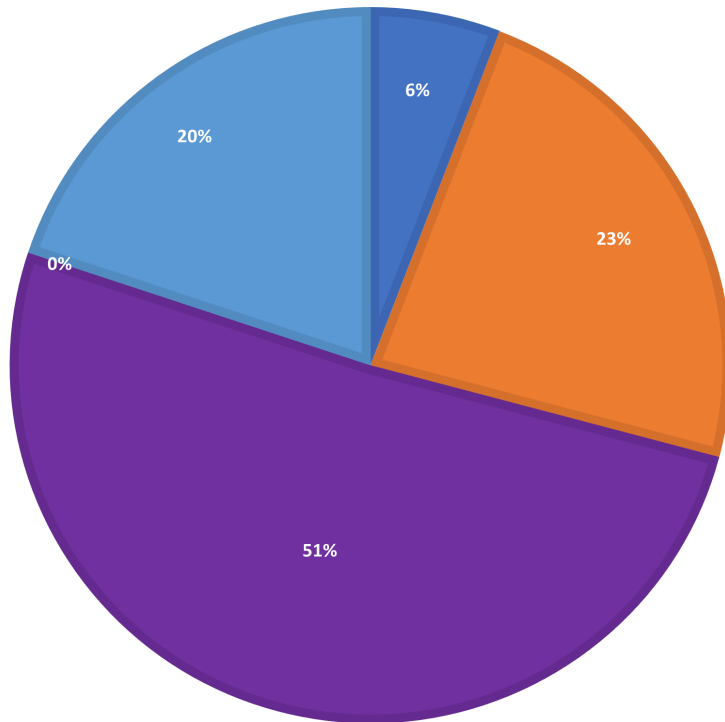
GROUP B CRIMES (Arrests Only)

	OCT 2022	NOV 2022	DEC 2022	2021	2022	2021-2022 % CHANGE
Adult Felony	17	14	12	198	194	▼-2.02%
Adult Misdemeanor	55	47	52	610	671	▲10.00%
Juvenile Felony	0	4	0	5	8	▲60.00%
Juvenile Misdemeanor	3	4	0	7	17	▲142.86%
TOTAL	75	69	64	820	890	▲8.54%

REPORTED ARRESTS

	OCTOBER 2022	NOVEMBER 2022	DECEMBER 2022
Total Arrests	75	64	67

■ OTHER/ASIAN
 ■ BLACK
 ■ HISPANIC/LATINO
 ■ UNKNOWN
 ■ WHITE



RACE	TOTAL	%
OTHER/ASIAN	12	6%
BLACK	48	23%
HISPANIC/LATINO	105	51%
UNKNOWN	0	0%
WHITE	41	20%

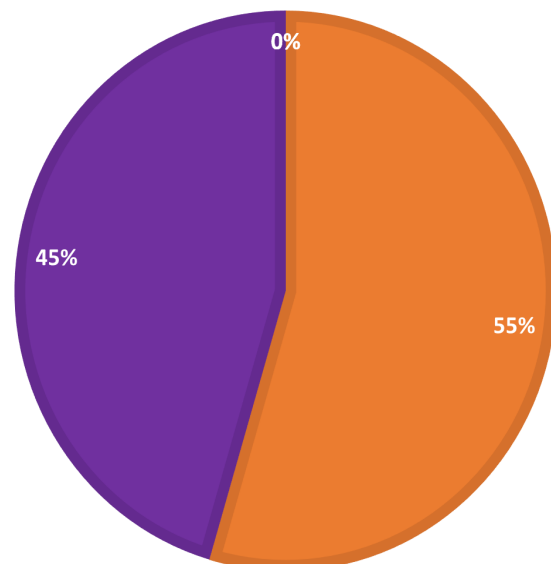
TOTAL 206 100%

JUVENILE ARRESTS (by RACE)

RACE	TOTAL	%
OTHER/ASIAN	0	0%
BLACK	6	55%
HISPANIC/LATINO	5	45%
UNKNOWN	0	0%
WHITE	0	0%

TOTAL 11 100%

■ OTHER/ASIAN
 ■ BLACK
 ■ HISPANIC/LATINO
 ■ UNKNOWN
 ■ WHITE



Oct – Dec 2022