



CITY OF SIGNAL HILL COVID-19 UPDATE

AS OF NOVEMBER 9, 2021



EVERYONE IS SUSCEPTIBLE TO COVID-19

Tracking COVID-19 in CA

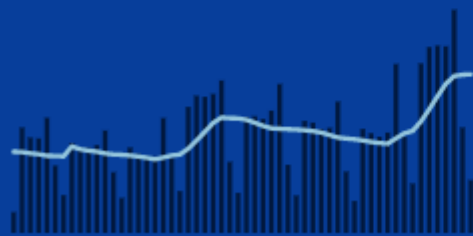
Updated November 8, 2021 with data from November 7, 2021

VACCINES ADMINISTERED

54,199,459 total

153,967 daily avg.

81.4% of population vaccinated



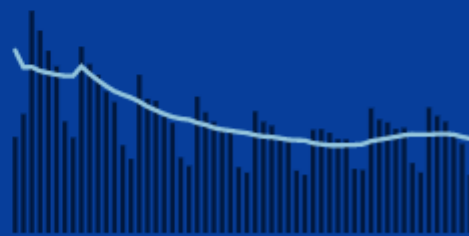
Past 8 weeks

CASES

4,707,178 total

5,232 daily avg.

12.8 new cases per 100K



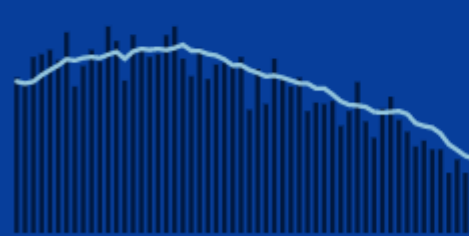
Past 8 weeks

DEATHS

71,979 total

51 daily avg.

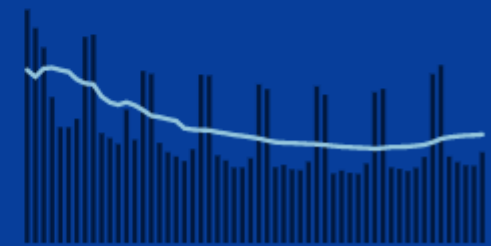
0.1 new deaths per 100K



Past 8 weeks

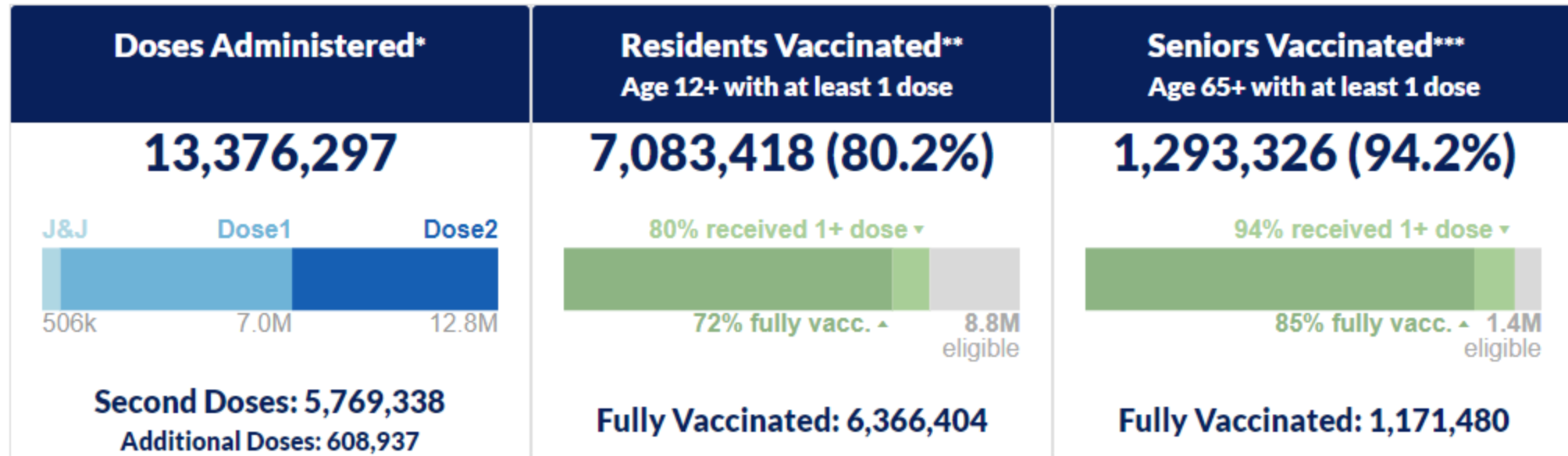
TESTS

2.4% test positivity



Past 8 weeks

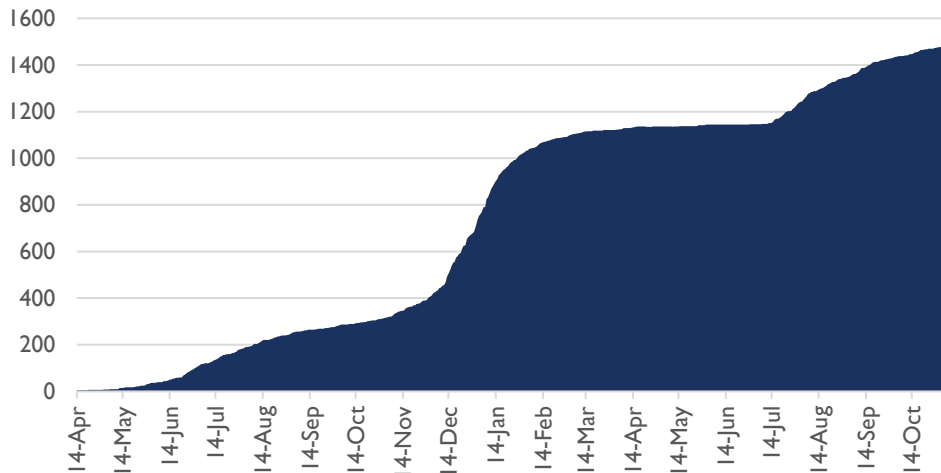
VACCINATION INFORMATION



SIGNAL HILL

- Signal Hill: 1,482 (+12) confirmed cases, 11 (+1) deaths

Signal Hill COVID-19 Confirmed Cases



12-17 with 1+ Dose	Population (12-17)	12-17 Pop. Vaccinated (%)
518	861	60.2%
12+ with 1+ Dose	Population (12+)	12+ Pop. Vaccinated (%)
7,975	9,907	80.5%
65+ with 1+ Dose	Population (65+)	65+ Pop. Vaccinated (%)
1,457	1,523	95.7%

PFIZER COVID-19 VACCINE NOW APPROVED FOR KIDS 5-11 YEARS OLD

PFIZER COVID-19 VACCINE IS NOW APPROVED FOR KIDS 5-11 YEARS OLD

After reviewing safety and efficacy data, the FDA and CDC have approved the vaccine for children 5 to 11 and they may now get vaccinated.

Fully vaccinated children will help prevent the spread of COVID-19 and be better protected at schools, youth activities, and for the holiday season.



For more info, visit [VaccinateLACounty.com](https://www.vaccinatelacounty.com)



CASE INVESTIGATION AND CONTACT TRACING

CASE INVESTIGATION AND HOW IT WORKS

IF YOU TEST POSITIVE FOR COVID-19

DO YOUR PART BY ANSWERING A FEW SIMPLE QUESTIONS WHEN PUBLIC HEALTH CALLS.

THIS IS CONFIDENTIAL.



Public Health will ask about:

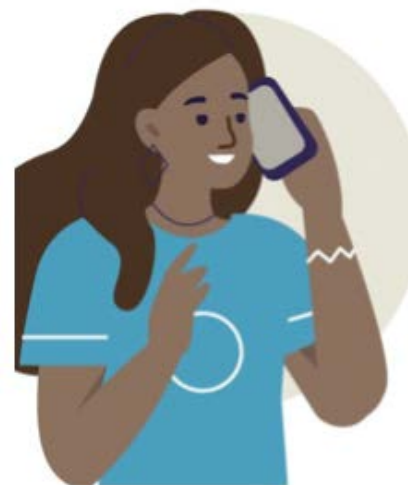
- The places you have been
- The people you have been around while infectious
- Those you have been in contact with for longer than 15 minutes, up to 48 hours before you had symptoms
- Public Health will notify those people about their exposure to the virus – we will not tell them about you

Contact Tracing & How It Works

IF YOU HAVE BEEN IN CONTACT WITH SOMEONE WHO HAS COVID-19

DO YOUR PART BY ANSWERING A FEW SIMPLE QUESTIONS WHEN PUBLIC HEALTH CALLS.

THIS IS CONFIDENTIAL.



Public Health will:

- Let you know if you may have been exposed to the virus
- See how you are feeling
- Let you know what to do based on your risk for developing COVID-19

PROVIDING PROOF OF FULL VACCINATION

- Beginning November 4, all nightclubs, lounges, bars, breweries, wineries, and distilleries covered by LACDPH must require patrons 12 years and older to provide proof of full vaccination for entry into the facility to obtain indoor service
- Beginning November 8, establishments located in the City of LA are subject to the LA City Vaccination Ordinance
 - Food & Beverage Venues
 - Gyms & Fitness Venues
 - Entertainment & Recreation Venues
 - Personal Care Establishments
 - Indoor City Facilities
 - Outdoor Event Venues
 - Ewddlacity.com/index.php/recovery/safepassla

SAFEPASS L.A.

**THE CITY OF LOS ANGELES
REQUIRES YOU TO BE VACCINATED
AGAINST COVID-19
TO ENTER THIS BUSINESS.**

**IF YOU ARE ELIGIBLE FOR VACCINATION, PLEASE HAVE YOUR PROOF OF
VACCINATION AND ID READY (ID REQUIRED IF AGE 18+)**



Scan QR code to access your digital vaccine record
<https://myvaccinerecord.cdph.ca.gov>



**WORKING TOGETHER WE CAN SLOW THE SPREAD.
FOR MORE INFORMATION, VISIT WWW.SIGNALHILL.ORG/CORONAVIRUS**

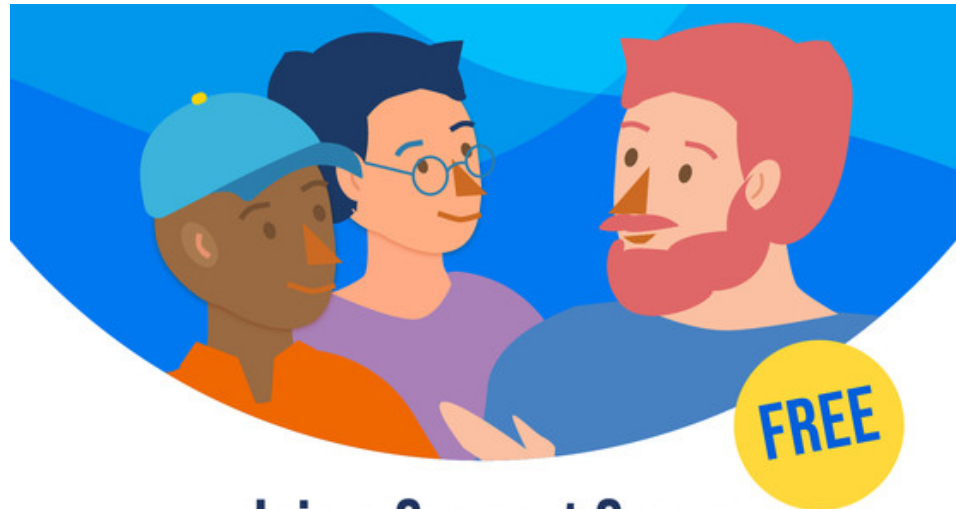
WORKING TOGETHER

- LACDPH Mask Milestones
 - Community transmission must fall significantly below current levels
 - County must record three consecutive weeks at or below a “moderate” level of transmission
 - Hospitalizations must decline and stay low
 - Daily hospitalizations must remain at fewer than 600 for three straight weeks
 - More people need to complete their vaccination series
 - At least 80% of residents 12 and older must be fully vaccinated
 - No significantly circulating variants
- For indoor public settings with fewer than 1,000 people, indoor mask requirements could be lifted **ONLY IF** all employees and customers are fully vaccinated and there is a verification process in place



WORKING TOGETHER WE CAN SLOW THE SPREAD.
FOR MORE INFORMATION, VISIT WWW.SIGNALHILL.ORG/CORONAVIRUS

FREE MENTAL HEALTH SERVICES



Join a Support Group

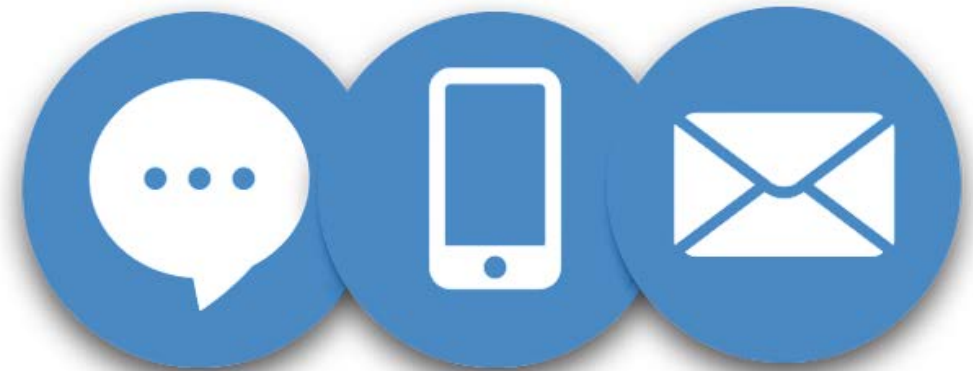
Get online mental health support 24/7 with on-demand coaching, lessons and more brought to you by the Los Angeles County Department of Mental Health.

Sign up at lacounty.iprevail.com



CITY HALL

- Water payments
 - Online www.cityofsignalhill.org, phone 562-989-7315, drop box at City Hall
- Parking citations
 - Online www.cityofsignalhill.org, phone 800-300-9915
- Planning and permitting
 - Email CommDev@cityofsignalhill.org, phone 562-989-7340
- Public Works
 - Email PublicWorksEngineering@cityofsignalhill.org, phone 562-989-7250
- General questions
 - Email Admin@cityofsignalhill.org, phone 562-989-7300
- Library
 - Online www.cityofsignalhill.org/library, phone Monday - Friday 12:00 p.m. - 5:00 p.m.



WORKING TOGETHER WE CAN SLOW THE SPREAD.

FOR MORE INFORMATION, VISIT WWW.SIGNALHILL.ORG/CORONAVIRUS